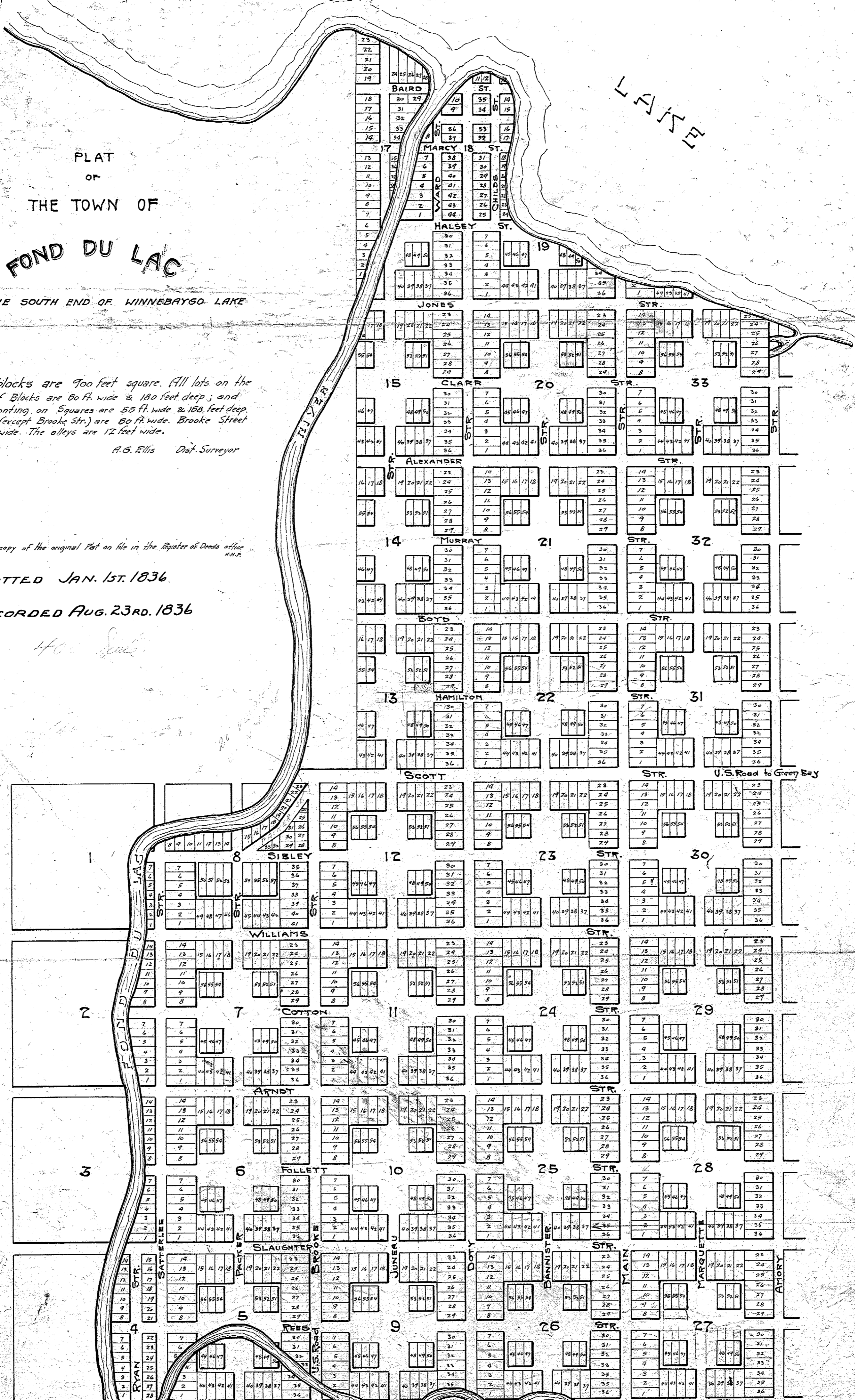


# WINNEBAGO



PLAT  
OF  
THE TOWN OF  
**FOND DU LAC**

AT THE SOUTH END OF WINNEBAGO LAKE

*NOTE:* All full blocks are 900 feet square. All lots on the outside of Blocks are 50 ft. wide & 130 feet deep; and those fronting on Squares are 50 ft. wide & 150 feet deep. All streets (except Brooke Str.) are 60 ft. wide. Brooke Street is 80 ft. wide. The alleys are 12 feet wide.

A.G. Ellis Dist. Surveyor

This is a copy of the original Plat on file in the Register of Deeds office

PLATTED JAN. 1ST. 1836.

RECORDED AUG. 23RD. 1836