

HOUSING AFFORDABILITY REPORT 2019



**City of Fond du Lac
Department of Community Development
December 2020**

Table of Contents

EXECUTIVE SUMMARY	2
HOUSING AFFORDABILITY REPORT REQUIREMENTS	2
HOUSING AFFORDABILITY DATA AND RESPONSES	3
Undeveloped Parcels Zoned for Residential Development	4
Undeveloped Parcels with Available Public Facilities/Services	4
Plans & Regulations	5
Financial Impact of Plans and Regulations.....	7
MODIFICATION OF CONSTRUCTION & DEVELOPMENT REGULATIONS.....	7
Housing Demand.....	8
Housing Cost Burden.....	8
Reductions in Time and Cost.....	10
APPENDIX A: PARCEL ANALYSIS MAPS & TABLES	12
APPENDIX B: FUTURE LAND USE.....	44

EXECUTIVE SUMMARY

In 2018, the Wisconsin State Legislature approved new legislation which requires villages and cities of 10,000 population or more to provide two separate annual reports related to housing affordability and housing fees in an effort to shed light and foster change on affordable housing issues across the state. Specifically, this document meets the requirements for Wis. Stats. 66.10013 (Housing affordability report) for the year 2019.

This report was updated based upon the Housing Affordability Report 2018, drafted in partnership with East Central Wisconsin Planning Commission.

HOUSING AFFORDABILITY REPORT REQUIREMENTS

Requirements of this report include the following elements:

- 1) In this section, “municipality” means a city or village with a population of 10,000 or more.
- 2) Not later than January 1, 2021, a municipality shall prepare a report of the municipality's implementation of the housing element of the municipality's comprehensive plan under s.66.1001. The municipality shall update the report annually, not later than January 31. The report shall contain all of the following:
 - a. The number of subdivision plats, certified survey maps, condominium plats, and building permit applications approved in the prior year.
 - b. The total number of new residential dwelling units proposed in all subdivision plats, certified survey maps, condominium plats, and building permit applications that were approved by the municipality in the prior year.
 - c. A list and map of undeveloped parcels in the municipality that are zoned for residential development.
 - d. A list of all undeveloped parcels in the municipality that are suitable for, but not zoned for, residential development, including vacant sites and sites that have potential for redevelopment, and a description of the zoning requirements and availability of public facilities and services for each property.
 - e. An analysis of the municipality's residential development regulations, such as land use controls, site improvement requirements, fees and land dedication requirements,

and permit procedures. The analysis shall calculate the financial impact that each regulation has on the cost of each new subdivision. The analysis shall identify ways in which the municipality can modify its construction and development regulations, lot sizes, approval processes, and related fees to do each of the following:

1. Meet existing and forecasted housing demand, and;
2. Reduce the time and cost necessary to approve and develop a new residential subdivision in the municipality by 20 percent.

HOUSING AFFORDABILITY DATA AND RESPONSES

Part 2A: The number of subdivision plats, certified survey maps, condominium plats, and building permit applications approved in the prior year (2019) for the City is illustrated in Table 1.

Table 1: Approved Plats, CSM's and Building Permits (2019)

Subdivision Plats	Certified Survey Maps	Condominium Plats	Single Family Building Permits	2-Family Building Permits	Multi-family Building Permits	Mobile Home Building Permits
1	16	0	24	7	10	0

Part 2B: The total number of new residential dwelling units proposed in all subdivision plats, certified survey maps, condominium plats, and building permit applications that were approved by the municipality in the prior year (2019) for the City is illustrated in Table 2.

Table 2: Proposed & Approved Residential Dwelling Units within Plats & CSM's (2019)

Proposed			Approved			
Residential Dwelling Units (Subdivision Plats)	Residential Dwelling Units (Certified Survey Map)	Residential Dwelling Units (Condominium Plats)	Single Family Building Units	2-Family Building Units	Multi-family Building Units	Mobile Home Building Units
16	0	0	24	14	112	0

Parts 2C/2D: A list and map of undeveloped parcels in the municipality that are zoned for residential development. A list of all undeveloped parcels in the municipality that are suitable for, but not zoned for, residential development, including vacant sites and sites that have potential for

redevelopment, and a description of the zoning requirements and availability of public facilities and services for each property. Please refer to **Maps 1-2 and Tables 5-6** in the appendix.

Maps for the housing affordability report were developed using a variety of GIS data sources and are contained in Appendix A. From a process standpoint, the maps were developed using the following methodologies:

Undeveloped Parcels Zoned for Residential Development

1. Map 1 was created by using current tax parcel data (circa December, 2019). A subset of “vacant” parcels was created by selecting all parcels which had no “improvement value” on the property.
2. Current zoning districts for the City were then overlaid on this subset of vacant parcels and additional parcels were removed as necessary (i.e. stormwater ponds, larger areas of institutional lands that have no development potential, city owned land, railroad company owned land, cemeteries, etc.).
3. The final map illustrates vacant parcels that contain “residential” zoning and those that are “non-residential” (i.e. commercial, industrial, institutional, etc.) in nature.
4. Table 5 provides a listing of these parcels along with additional property characteristics.

Undeveloped Parcels with Available Public Facilities/Services

Map 2 and its associated parcel table are contained in Appendix A and were created using the aforementioned data layers, plus the inclusion of municipal water and sewer line data.

1. Municipal sewer and water line data was brought in, typically with service lines being located in the road rights-of-way.
2. A 100-foot ‘buffer’ was applied to either side of these service lines.

3. Any of the vacant residential/non-residential zoned parcels which fell partly within this 100-foot buffer were selected to produce a map showing which undeveloped parcels have services available.

Part 2E: An analysis of the municipality's residential development regulations, such as land use controls, site improvement requirements, fees and land dedication requirements, and permit procedures. The analysis shall calculate the financial impact that each regulation has on the cost of each new subdivision. The analysis shall identify ways in which the municipality can modify its construction and development regulations, lot sizes, approval processes, and related fees to: 1) Meet existing and forecasted housing demand, and; 2) Reduce the time and cost necessary to approve and develop a new residential subdivision in the municipality by 20 percent.

Plans & Regulations

The City of Fond du Lac has a number of plans, policies, regulations and fee/permit requirements which guide land use and matters pertaining to residential housing development.

The City of Fond du Lac's comprehensive plan, adopted in 2009 and currently going through an update includes a future land use map, dated October, 2009 (Appendix B). The future land use map illustrates the preferred land use and sets forth the broad policy decisions regarding the location and types of housing that are envisioned in the future. This document is of primary importance in that it sets the tone for addressing affordable housing opportunities and guiding development decisions.

Additional plans, policies and regulations have been adopted by the City to address residential housing including:

- City of Fond du Lac Zoning Ordinance (Chapter 720) outlines basic land use requirements, lot sizes and property setbacks.
- City of Fond du Lac Subdivision Ordinance (Chapter 705) specifies site improvement requirements and land dedication requirements, if any.
- Plan Review and Building Permit procedures have been adopted by the City of Fond du Lac and are reviewed periodically.

- Development Standards and Specifications for residential subdivisions are in place and are typically implemented through a Development Agreement. In most cases, the developer is responsible for the entire initial cost of infrastructure including, but not limited to: roads, curb, gutter, stormwater, sewer and water mains. Once the infrastructure meets the standards, the community will take ownership and be responsible for future maintenance (unless otherwise noted in the Developer's Agreement). In some cases, cost-sharing, credits, or deferred assessments will be provided. While the construction of infrastructure is a major consideration in the overall cost of housing, this report has made no attempt to calculate these costs as they can vary greatly depending on size and density of the subdivision, as well as other geographic factors. It should be noted that in general, higher density developments reduce infrastructure costs relative to low density ones. The development community has not fully utilized the ability to create such developments which therefore impacts the cost of housing.
- Fees have been adopted for various activities related to housing development. These fees are outlined in detail in the accompanying *Housing Fee Report*. The City of Fond du Lac currently has several types of fees schedules published on its website which may apply to new housing development:
 - Building Permit Fee Schedule
 - Occupancy Permit Fee Schedule
 - HVAC and Electrical Permit Fee Schedule
 - Assessment Valuation Inspection Fee
 - Plumbing Permit Fee Schedule
 - Erosion Control Permit Fee Schedule – Refer to Section 325: Erosion Control and Stormwater Management (Fond du Lac Municipal Code)
- An *Analysis of Impediments to Fair Housing* (2017) report was prepared for use as a planning tool to ensure equal housing opportunities for all persons in the City of Fond du Lac. The report has three main components: an analysis of demographic and economic characteristics in relation to their impact on fair housing; a description of fair housing impediments; and recommendations designed to dismantle impediments.
- A *Summary of Assisted Care and Affordable Housing* was prepared to assist those looking for assisted living and/or affordable housing.

- Tax Increment Finance Districts:
 - TIF District #13 – Mixed Use District. Since its creation, the District has attracted more commercial uses.
 - TID #15 – Redevelopment District at Brooke Street and Western Avenue included the development of affordable housing units.
 - TID #16 – Redevelopment District at Macy Street and Merrill Avenue included the development of affordable housing units (with a focus or desire to support live/work spaces for artists and other entrepreneurs.)
 - TID #19 – Redevelopment District – 131 S. Main Street – market rate housing with first floor commercial in the downtown.
 - TID #20 – Redevelopment District – St Mary’s Parish School Apartments – affordable housing units.
 - TID #21 – Redevelopment District – Brooke Street – the goal is to include commercial uses and with a mix of housing types (affordable and market rate).

Financial Impact of Plans and Regulations

The financial impacts of local regulations are outlined in the City of Fond du Lac’s Housing Fee Report (2019). Regulations enforced by federal and state government also contributed to the increase in costs for development, yet municipalities have no control over these regulations or the associated costs to enforce. Wisconsin has adopted a state-wide uniform building code, which establishes standards for residential dwelling units. In addition, the requirements of NR216 have substantially increased the cost of stormwater management. Under NR216, municipalities are required to reduce stormwater runoff by implementing stormwater management programs. These programs include construction site pollutant control, post- construction stormwater management, etc. Furthermore, restrictive covenants imposed by developers may also add cost to development by setting architectural guidelines, types of exterior building materials, structural design or dictating the size of a dwelling unit.

MODIFICATION OF CONSTRUCTION & DEVELOPMENT REGULATIONS

This analysis shall identify ways in which the municipality can modify its construction and development regulations, lot sizes, approval processes, and related fees in order to do each of the following: (1) Meet existing and forecasted housing demand, and; (2) Reduce the time and cost necessary to approve and develop a new residential subdivision in the municipality by 20 percent.

Housing Demand

Housing demand for the City of Fond du Lac has been calculated using accepted methodologies developed by the Wisconsin Department of Administration and US Census. In this case, two components were evaluated: a) forecasted housing demand by household projections, and; b) housing cost burden.

Based on Wisconsin Department of Administration and U.S. Census data, Table 3 illustrates household growth for the City.

Table 3: City of Fond du Lac Year 2040 Household Projections

2020	2025	2030	2035	2040	Diff. 2020-2040
19,415	20,104	20,645	20,856	20,773	1,358

WDOA, Wisconsin Demographic Services Center, Vintage 2013 Population Projections

Housing Cost Burden

Table 4 illustrates the current “Housing Cost Burden” for City of Fond du Lac households. For any particular household income category, the corresponding number of households which spend 30% or more of their income on housing costs is shown. In general, those with lower incomes are more burdened.

Table 4: City of Fond du Lac Housing Burden (2014-2018)

Household Income & percent spent on housing costs	Estimate	Percent of Total (30% or more)
Total Owner-occupied housing units:	10,514	
Less than \$20,000:	836	
30 percent or more	732	38
\$20,000 to \$34,999:	1,349	
30 percent or more	584	30
\$35,000 to \$49,999:	1,474	
30 percent or more	288	15
\$50,000 to \$74,999:	2,378	
30 percent or more	273	14
\$75,000 or more:	349	
30 percent or more	44	2
Zero or negative income	70	
Total Renter-occupied housing units:	7,307	
Less than \$20,000:	1,772	
Less than 20 percent	62	
20 to 29 percent	154	
30 percent or more	1,556	52
\$20,000 to \$34,999:	1,859	
Less than 20 percent	112	
20 to 29 percent	633	
30 percent or more	1,114	37
\$35,000 to \$49,999:	1,302	
Less than 20 percent	473	
20 to 29 percent	522	
30 percent or more	307	10
\$50,000 to \$74,999:	1,307	
Less than 20 percent	1,011	
20 to 29 percent	255	
30 percent or more	41	1
\$75,000 or more:	767	
Less than 20 percent	740	
20 to 29 percent	27	
30 percent or more	0	0
Zero or negative income	124	
No cash rent	176	

Source: 2014-2018 ACS 5-Year Estimates, B25106

Based on this information more affordable homes and rentals are needed within the City, particularly for those with lower incomes. However, providing affordable housing involves more than reducing costs imposed by municipalities or revising local policies. Policies imposed by others and limited funding also affect housing affordability. The U.S. Department of Housing and Urban Development provides housing choice vouchers for very low-income families to reduce the cost of housing. Yet, this program has not been expanded in years and does not supply a sufficient supply of vouchers to address housing affordability for renters. Other programs correspondingly provide assistance for low-income renters and homeowners but these programs likewise fall short of the needs. Banks and other financial institutions must also accept some of the responsibility since they must approve financing for affordable housing.

Additionally, the City has only one qualifying Census tract (located in the downtown) in which to build affordable housing units eligible for Housing Tax Credits. Not only does this limit the number of projects that can be built but it does not take into account providing affordable housing closer to employment areas such as the west side of the City where manufacturing jobs are located within the industrial parks.

Reductions in Time and Cost

In order to reduce the time and cost necessary to approve and develop a new residential subdivision in the municipality by 20 percent, a number of things need to be taken into consideration.

1. Where exactly this burden should be placed? Should this burden be placed on the public sector entirely? Or should the private sector (homebuilders, realty professionals, etc.) share some of this burden? Housing style, design, size and materials choice make up a large portion of the cost of housing. When the development community places restrictive covenants on subdivisions, this inherently increases the costs for housing.
2. The cost of infrastructure and maintenance was not part of the state's requirement to analyze and include in this report yet is a critical factor for the costs associated with new housing development. Furthermore, state imposed levy limits further impact the municipalities' ability to maintain or construct new infrastructure.
3. Lastly, as noted in the Housing Fee Report, a number of additional costs are imposed by county, state or local entities (sanitary districts) for things such as plumbing plan reviews,

utility assessments and the like. These items are not even considered in the statutory requirements for this report and not in the purview of the municipality to control.

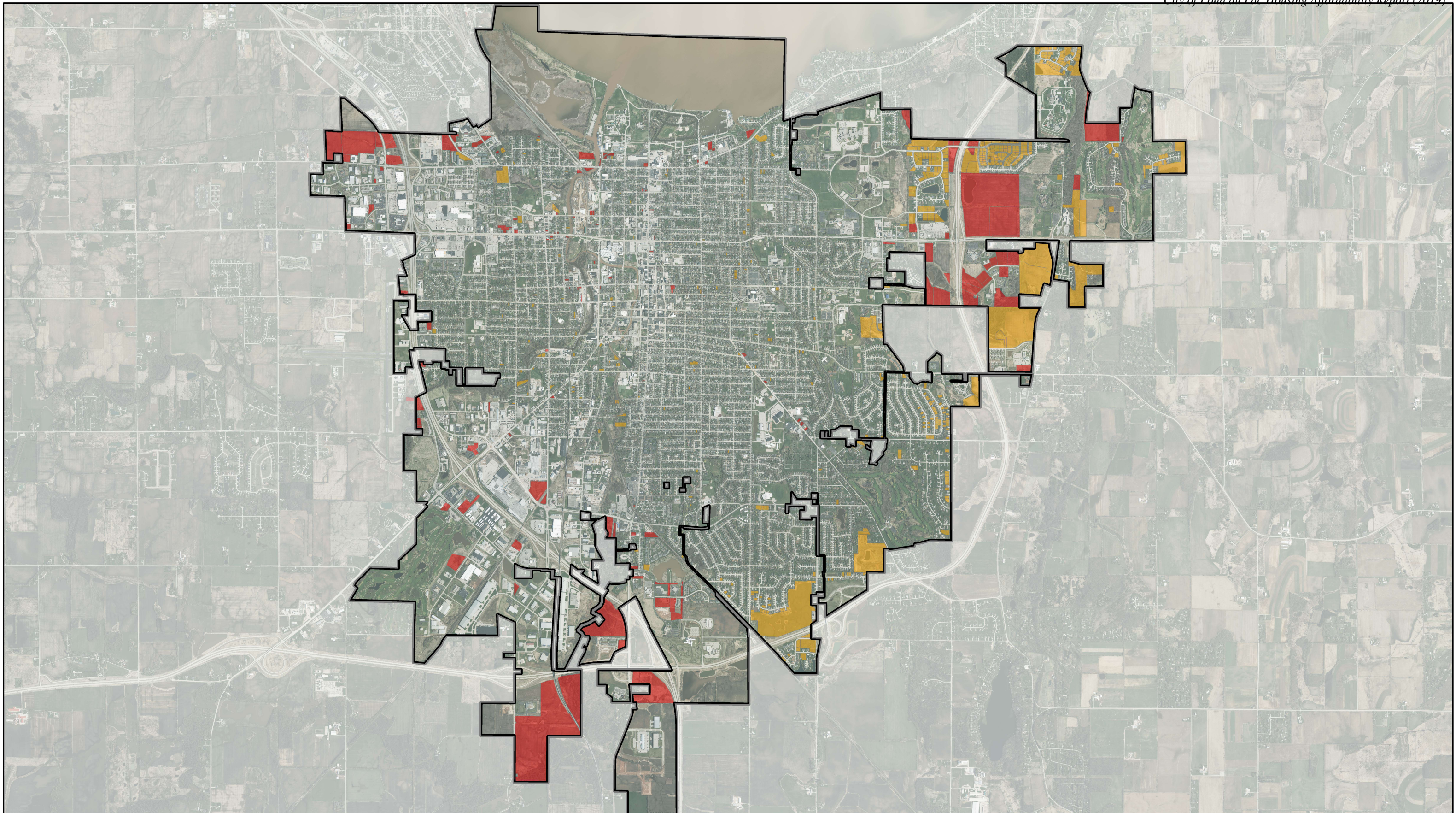
The City of Fond du Lac could, of course, simply slash the costs of its various permits and fees by 20%, thereby reducing the amount of revenue generated (see Housing Fee Report). This revenue is used by the City to fund the necessary services and safety inspections that are required by state law and/or are simply good practice. By cutting fees 20%, it is likely that the plan review, approval and permit issuance processes will take longer due to reduced staffing and capacity.

The City could also reduce minimum lot sizes, but would this actually encourage smaller more affordable houses? Reducing parking requirements and street width could potentially reduce the cost to build and maintain infrastructure, making housing more affordable. The added benefit is that this would not only reduce infrastructure costs but would also reduce stormwater runoff from impervious surfaces. While the City could make a number of changes, ultimately it is whether or not the development community takes advantage of changes in order to create more affordable homes. Taking this a step further, new models of housing development such as Cottage-Style developments or Accessory Dwelling Units (ADUs), or new public-private financing partnerships could be looked at as a way to further reduce housing costs.

Partnerships with non-profit organizations such as Habitat for Humanity have also proven successful. Also, there may be more affordable housing units but some landlords may be unwilling to rent to certain individuals with limited incomes or concerns with rental histories. Finally, the City of Fond du Lac has a larger share of the rental market, when compared to the county as a whole, since smaller communities are either not interested or may not be able to accommodate rental development.

Reductions in time could reduce costs; however, developers and the state also play a role in the process (cost) to approve a new residential subdivision. For example an incomplete application will necessitate additional time by the developer to submit further information. Plats must be approved following state statute 236, which clearly sets out procedures which must be followed by an entity approving a plat. If the proposed development is outside of a municipality, it must first be annexed into the community. Again the process to annex properties is also laid out in the state statutes (66.0217, 66.0219, 66.0221 and 66.0223), and municipalities must follow these procedures. The City of Fond du Lac has a Cooperative Plan (Intergovernmental Agreement) in place with adjoining towns. Parcels within its growth area are generally required to annex into the City before they are allowed to develop. This may provide additional opportunities for housing development. Municipalities may be able to incorporate additional efficiencies in the subdivision review process which may impact the time necessary to approve a plat.

APPENDIX A: PARCEL ANALYSIS MAPS & TABLES



VACANT PARCELS

MAP I

VACANT PARCELS (669)

RESIDENTIAL (529)

NON-RESIDENTIAL (140)

DISCLAIMER

THE CITY OF FOND DU LAC CREATES AND MAINTAINS GEOSPATIAL PRODUCTS FOR ITS OWN USE. THESE RESOURCES ARE NOT INTENDED TO BE USED FOR LEGAL, ENGINEERING, OR SURVEY PURPOSES, AND ARE PROVIDED "AS-IS" WITHOUT WARRANTY OF ANY KIND. THE CITY OF FOND DU LAC ASSUMES NO LIABILITY FOR THE ACCURACY, CORRECTNESS, OR USE OF THESE PRODUCTS.



Table 5: Vacant Parcels with Residential Non-Residential Zoning

PIN	Acres	Code	Zoning - Residential	Zoning - Non-Residential
FDL-15-17-01-42-499-00	5.45	A		Agricultural District
FDL-15-17-05-43-500-00	2.10	A		Agricultural District
FDL-15-17-05-43-502-00	27.34	A		Agricultural District
FDL-15-17-12-41-248-00	5.72	A		Agricultural District
FDL-15-17-12-44-998-00	7.58	A		Agricultural District
FDL-15-17-12-44-999-00	11.67	A		Agricultural District
FDL-15-18-05-31-001-01	0.36	A		Agricultural District
FDL-15-18-05-32-250-00	26.38	A		Agricultural District
FDL-15-18-07-11-001-00	3.69	A		Agricultural District
FDL-15-18-07-24-750-00	30.20	A		Agricultural District
FDL-15-18-07-24-751-00	1.88	A		Agricultural District
FDL-15-18-07-24-999-01	97.65	A		Agricultural District
A Total	220.02			
FDL-15-17-02-33-530-00	0.25	C-2		General Business District
FDL-15-17-02-33-534-00	0.29	C-2		General Business District
FDL-15-17-03-34-796-00	4.20	C-2		General Business District
FDL-15-17-03-43-510-02	0.58	C-2		General Business District
FDL-15-17-04-34-755-00	6.93	C-2		General Business District
FDL-15-17-04-43-503-00	0.98	C-2		General Business District
FDL-15-17-04-43-503-01	0.67	C-2		General Business District
FDL-15-17-04-43-523-00	0.26	C-2		General Business District
FDL-15-17-04-43-528-00	1.09	C-2		General Business District
FDL-15-17-05-44-750-00	3.99	C-2		General Business District
FDL-15-17-05-44-750-01	2.32	C-2		General Business District
FDL-15-17-05-44-751-00	2.92	C-2		General Business District
FDL-15-17-05-44-754-00	5.06	C-2		General Business District
FDL-15-17-08-11-007-01	0.34	C-2		General Business District
FDL-15-17-08-11-008-01	0.49	C-2		General Business District
FDL-15-17-08-13-501-05	1.45	C-2		General Business District
FDL-15-17-08-13-504-00	0.96	C-2		General Business District
FDL-15-17-08-44-763-00	1.37	C-2		General Business District
FDL-15-17-09-13-508-00	1.63	C-2		General Business District
FDL-15-17-09-13-512-00	0.27	C-2		General Business District
FDL-15-17-09-14-760-00	0.32	C-2		General Business District
FDL-15-17-09-14-786-00	0.54	C-2		General Business District
FDL-15-17-10-12-323-00	0.18	C-2		General Business District
FDL-15-17-10-12-325-00	0.10	C-2		General Business District
FDL-15-17-10-13-555-00	0.09	C-2		General Business District
FDL-15-17-10-14-773-00	0.14	C-2		General Business District
FDL-15-17-10-23-514-00	0.07	C-2		General Business District
FDL-15-17-10-23-515-00	0.11	C-2		General Business District
FDL-15-17-10-23-525-00	0.14	C-2		General Business District
FDL-15-17-10-23-547-00	0.07	C-2		General Business District

Table 5: Vacant Parcels with Residential Non-Residential Zoning

PIN	Acres	Code	Zoning - Residential	Zoning - Non-Residential
FDL-15-17-10-23-548-00	0.13	C-2		General Business District
FDL-15-17-10-32-274-00	0.14	C-2		General Business District
FDL-15-17-10-32-341-00	0.26	C-2		General Business District
FDL-15-17-10-32-345-00	0.13	C-2		General Business District
FDL-15-17-10-33-617-00	0.24	C-2		General Business District
FDL-15-17-10-33-630-00	0.06	C-2		General Business District
FDL-15-17-10-33-647-00	0.14	C-2		General Business District
FDL-15-17-10-41-019-00	0.11	C-2		General Business District
FDL-15-17-10-41-070-00	0.06	C-2		General Business District
FDL-15-17-10-41-071-00	0.15	C-2		General Business District
FDL-15-17-10-41-072-00	0.04	C-2		General Business District
FDL-15-17-12-13-513-00	2.47	C-2		General Business District
FDL-15-17-12-14-767-00	0.98	C-2		General Business District
FDL-15-17-12-42-250-01	0.78	C-2		General Business District
FDL-15-17-14-24-836-00	0.24	C-2		General Business District
FDL-15-17-14-24-837-00	0.22	C-2		General Business District
FDL-15-17-14-42-299-00	0.21	C-2		General Business District
FDL-15-17-14-44-766-00	0.21	C-2		General Business District
FDL-15-17-14-44-767-00	0.21	C-2		General Business District
FDL-15-17-14-44-768-01	0.31	C-2		General Business District
FDL-15-17-14-44-775-00	0.33	C-2		General Business District
FDL-15-17-15-32-324-00	0.27	C-2		General Business District
FDL-15-17-15-42-320-00	0.10	C-2		General Business District
FDL-15-17-16-14-801-00	0.28	C-2		General Business District
FDL-15-17-16-22-266-00	1.37	C-2		General Business District
FDL-15-17-16-23-525-00	0.61	C-2		General Business District
FDL-15-17-16-23-526-00	0.24	C-2		General Business District
FDL-15-17-16-33-501-00	4.62	C-2		General Business District
FDL-15-17-16-33-503-02	1.48	C-2		General Business District
FDL-15-17-16-33-507-00	0.84	C-2		General Business District
FDL-15-17-16-43-525-00	0.26	C-2		General Business District
FDL-15-17-21-14-751-01	1.26	C-2		General Business District
FDL-15-17-21-14-752-01	9.15	C-2		General Business District
FDL-15-17-21-21-001-00	2.27	C-2		General Business District
FDL-15-17-21-21-001-02	0.80	C-2		General Business District
FDL-15-17-21-31-010-00	5.10	C-2		General Business District
FDL-15-17-21-44-756-00	2.73	C-2		General Business District
FDL-15-17-22-31-011-01	7.14	C-2		General Business District
FDL-15-17-22-41-019-00	2.11	C-2		General Business District
FDL-15-17-22-42-251-00	0.09	C-2		General Business District
FDL-15-17-22-42-268-00	0.60	C-2		General Business District
FDL-15-17-22-43-505-00	0.86	C-2		General Business District
FDL-15-17-22-43-509-00	0.88	C-2		General Business District

Table 5: Vacant Parcels with Residential Non-Residential Zoning

PIN	Acres	Code	Zoning - Residential	Zoning - Non-Residential
FDL-15-17-26-14-997-00	0.38	C-2		General Business District
FDL-15-17-27-12-253-01	1.18	C-2		General Business District
FDL-15-17-27-31-249-06	2.71	C-2		General Business District
FDL-15-17-27-44-999-00	33.24	C-2		General Business District
FDL-15-18-06-33-529-01	1.17	C-2		General Business District
FDL-15-18-06-33-530-01	2.48	C-2		General Business District
FDL-15-18-06-33-531-00	1.48	C-2		General Business District
FDL-15-18-06-33-532-00	1.26	C-2		General Business District
FDL-15-18-07-31-004-01	1.28	C-2		General Business District
FDL-15-18-18-13-500-01	4.06	C-2		General Business District
C-2 Total	137.54			
FDL-15-17-02-42-280-00	1.73	C-R		Commercial-Recreation District
FDL-15-17-03-34-764-00	0.23	C-R		Commercial-Recreation District
FDL-15-17-03-34-765-00	0.05	C-R		Commercial-Recreation District
FDL-15-17-03-34-766-00	0.22	C-R		Commercial-Recreation District
FDL-15-17-03-34-768-00	0.81	C-R		Commercial-Recreation District
FDL-15-17-03-34-775-00	0.26	C-R		Commercial-Recreation District
FDL-15-17-03-34-776-00	0.04	C-R		Commercial-Recreation District
FDL-15-17-10-21-052-00	0.79	C-R		Commercial-Recreation District
FDL-15-17-10-22-251-00	0.17	C-R		Commercial-Recreation District
FDL-15-17-10-22-252-00	0.45	C-R		Commercial-Recreation District
C-R Total	4.75			
FDL-15-17-04-34-752-00	1.44	M-1		Industrial District
FDL-15-17-05-34-750-00	16.68	M-1		Industrial District
FDL-15-17-10-23-584-01	0.13	M-1		Industrial District
FDL-15-17-10-24-765-00	0.50	M-1		Industrial District
FDL-15-17-10-24-766-00	0.29	M-1		Industrial District
FDL-15-17-10-24-803-00	0.08	M-1		Industrial District
FDL-15-17-10-31-045-00	0.17	M-1		Industrial District
FDL-15-17-10-33-501-00	0.10	M-1		Industrial District
FDL-15-17-10-33-502-00	0.11	M-1		Industrial District
FDL-15-17-10-33-506-00	0.22	M-1		Industrial District
FDL-15-17-10-34-759-00	0.18	M-1		Industrial District
FDL-15-17-10-34-789-00	0.10	M-1		Industrial District
FDL-15-17-16-43-520-00	0.57	M-1		Industrial District
FDL-15-17-21-34-755-00	6.97	M-1		Industrial District
FDL-15-17-28-11-007-00	1.37	M-1		Industrial District
FDL-15-17-33-11-001-00	153.05	M-1		Industrial District
M-1 Total	181.95			
FDL-15-17-27-11-018-00	2.75	M-BP		Industrial-Business Park District
FDL-15-17-27-11-249-02	12.53	M-BP		Industrial-Business Park District
FDL-15-17-27-24-999-00	36.18	M-BP		Industrial-Business Park District

Table 5: Vacant Parcels with Residential Non-Residential Zoning

PIN	Acres	Code	Zoning - Residential	Zoning - Non-Residential
M-BP Total	51.47			
FDL-15-17-02-33-516-00	0.16	O		Office District
FDL-15-17-02-33-525-01	1.25	O		Office District
FDL-15-17-10-44-866-00	0.93	O		Office District
FDL-15-17-21-32-252-01	1.84	O		Office District
FDL-15-18-06-33-533-00	5.94	O		Office District
FDL-15-18-07-31-005-00	2.07	O		Office District
FDL-15-18-07-31-007-00	3.57	O		Office District
FDL-15-18-07-31-009-00	5.93	O		Office District
FDL-15-18-07-31-010-00	5.94	O		Office District
FDL-15-18-07-33-500-00	6.56	O		Office District
FDL-15-18-07-33-501-00	5.01	O		Office District
FDL-15-18-07-34-750-01	11.73	O		Office District
FDL-15-18-07-34-751-00	1.50	O		Office District
FDL-15-18-07-34-752-00	3.54	O		Office District
O Total	55.98			
FDL-15-17-01-43-514-00	0.80	R-1	Single-Family Residential District	
FDL-15-17-01-43-518-00	0.77	R-1	Single-Family Residential District	
FDL-15-17-01-44-750-00	0.81	R-1	Single-Family Residential District	
FDL-15-17-01-44-751-00	0.55	R-1	Single-Family Residential District	
FDL-15-17-01-44-752-00	0.63	R-1	Single-Family Residential District	
FDL-15-17-01-44-754-00	0.60	R-1	Single-Family Residential District	
FDL-15-17-01-44-755-00	0.60	R-1	Single-Family Residential District	
FDL-15-17-01-44-756-00	0.91	R-1	Single-Family Residential District	
FDL-15-17-01-44-757-00	0.69	R-1	Single-Family Residential District	
FDL-15-17-01-44-758-00	0.72	R-1	Single-Family Residential District	
FDL-15-17-01-44-760-00	0.69	R-1	Single-Family Residential District	
FDL-15-17-01-44-764-00	0.42	R-1	Single-Family Residential District	
FDL-15-17-01-44-765-00	0.47	R-1	Single-Family Residential District	
FDL-15-17-01-44-766-00	0.72	R-1	Single-Family Residential District	
FDL-15-17-01-44-769-00	0.72	R-1	Single-Family Residential District	
FDL-15-17-01-44-770-00	0.72	R-1	Single-Family Residential District	
FDL-15-17-01-44-771-00	0.72	R-1	Single-Family Residential District	
FDL-15-17-01-44-772-00	0.72	R-1	Single-Family Residential District	
FDL-15-17-01-44-773-00	0.73	R-1	Single-Family Residential District	
FDL-15-17-01-44-774-00	0.71	R-1	Single-Family Residential District	
FDL-15-17-01-44-775-00	0.71	R-1	Single-Family Residential District	
FDL-15-17-01-44-776-00	0.73	R-1	Single-Family Residential District	
FDL-15-17-01-44-777-00	0.74	R-1	Single-Family Residential District	
FDL-15-17-01-44-778-00	0.75	R-1	Single-Family Residential District	
FDL-15-17-01-44-779-00	0.76	R-1	Single-Family Residential District	
FDL-15-17-01-44-780-00	0.67	R-1	Single-Family Residential District	
FDL-15-17-01-44-781-00	0.61	R-1	Single-Family Residential District	

Table 5: Vacant Parcels with Residential Non-Residential Zoning

PIN	Acres	Code	Zoning - Residential	Zoning - Non-Residential
FDL-15-17-02-43-585-00	0.37	R-1	Single-Family Residential District	
FDL-15-17-04-43-531-00	0.34	R-1	Single-Family Residential District	
FDL-15-17-04-43-532-00	0.39	R-1	Single-Family Residential District	
FDL-15-17-04-44-765-00	0.02	R-1	Single-Family Residential District	
FDL-15-17-04-44-766-00	0.14	R-1	Single-Family Residential District	
FDL-15-17-04-44-807-00	0.17	R-1	Single-Family Residential District	
FDL-15-17-04-44-851-00	0.33	R-1	Single-Family Residential District	
FDL-15-17-09-14-761-00	0.41	R-1	Single-Family Residential District	
FDL-15-17-09-14-762-00	0.32	R-1	Single-Family Residential District	
FDL-15-17-09-14-782-00	0.44	R-1	Single-Family Residential District	
FDL-15-17-09-44-863-00	0.20	R-1	Single-Family Residential District	
FDL-15-17-10-22-262-00	0.15	R-1	Single-Family Residential District	
FDL-15-17-10-23-507-00	0.41	R-1	Single-Family Residential District	
FDL-15-17-10-23-508-00	0.24	R-1	Single-Family Residential District	
FDL-15-17-10-23-509-00	0.11	R-1	Single-Family Residential District	
FDL-15-17-10-23-510-00	0.44	R-1	Single-Family Residential District	
FDL-15-17-10-23-511-00	0.07	R-1	Single-Family Residential District	
FDL-15-17-10-23-512-00	0.06	R-1	Single-Family Residential District	
FDL-15-17-10-23-576-00	0.21	R-1	Single-Family Residential District	
FDL-15-17-10-32-292-00	0.11	R-1	Single-Family Residential District	
FDL-15-17-10-32-293-00	0.11	R-1	Single-Family Residential District	
FDL-15-17-10-32-339-00	0.11	R-1	Single-Family Residential District	
FDL-15-17-10-33-604-00	0.09	R-1	Single-Family Residential District	
FDL-15-17-11-12-294-00	0.20	R-1	Single-Family Residential District	
FDL-15-17-11-12-296-00	0.25	R-1	Single-Family Residential District	
FDL-15-17-11-21-051-00	0.15	R-1	Single-Family Residential District	
FDL-15-17-11-21-089-00	0.15	R-1	Single-Family Residential District	
FDL-15-17-11-21-139-00	0.15	R-1	Single-Family Residential District	
FDL-15-17-11-24-754-00	0.14	R-1	Single-Family Residential District	
FDL-15-17-11-24-755-00	0.14	R-1	Single-Family Residential District	
FDL-15-17-11-24-764-00	0.13	R-1	Single-Family Residential District	
FDL-15-17-11-24-769-00	0.14	R-1	Single-Family Residential District	
FDL-15-17-11-24-770-00	0.28	R-1	Single-Family Residential District	
FDL-15-17-11-31-076-00	0.12	R-1	Single-Family Residential District	
FDL-15-17-11-31-128-00	0.16	R-1	Single-Family Residential District	
FDL-15-17-11-32-290-00	0.10	R-1	Single-Family Residential District	
FDL-15-17-11-33-553-00	0.21	R-1	Single-Family Residential District	
FDL-15-17-11-34-766-00	0.13	R-1	Single-Family Residential District	
FDL-15-17-11-34-789-00	0.25	R-1	Single-Family Residential District	
FDL-15-17-11-34-790-00	0.37	R-1	Single-Family Residential District	
FDL-15-17-11-34-791-00	0.25	R-1	Single-Family Residential District	
FDL-15-17-11-41-067-00	0.20	R-1	Single-Family Residential District	
FDL-15-17-11-42-264-00	0.15	R-1	Single-Family Residential District	

Table 5: Vacant Parcels with Residential Non-Residential Zoning

PIN	Acres	Code	Zoning - Residential	Zoning - Non-Residential
FDL-15-17-11-43-527-00	0.36	R-1	Single-Family Residential District	
FDL-15-17-12-11-003-00	0.61	R-1	Single-Family Residential District	
FDL-15-17-12-11-004-00	0.87	R-1	Single-Family Residential District	
FDL-15-17-12-11-005-00	0.74	R-1	Single-Family Residential District	
FDL-15-17-12-11-006-00	0.76	R-1	Single-Family Residential District	
FDL-15-17-12-11-007-00	0.80	R-1	Single-Family Residential District	
FDL-15-17-12-11-026-00	1.54	R-1	Single-Family Residential District	
FDL-15-17-12-11-027-00	0.69	R-1	Single-Family Residential District	
FDL-15-17-12-11-028-00	0.64	R-1	Single-Family Residential District	
FDL-15-17-12-11-029-00	0.57	R-1	Single-Family Residential District	
FDL-15-17-12-11-030-00	0.55	R-1	Single-Family Residential District	
FDL-15-17-12-11-033-00	0.97	R-1	Single-Family Residential District	
FDL-15-17-12-12-255-00	0.78	R-1	Single-Family Residential District	
FDL-15-17-12-12-256-00	1.00	R-1	Single-Family Residential District	
FDL-15-17-12-12-257-00	0.92	R-1	Single-Family Residential District	
FDL-15-17-12-13-500-00	0.63	R-1	Single-Family Residential District	
FDL-15-17-12-13-512-00	2.34	R-1	Single-Family Residential District	
FDL-15-17-12-14-750-00	0.74	R-1	Single-Family Residential District	
FDL-15-17-12-14-751-00	0.66	R-1	Single-Family Residential District	
FDL-15-17-12-14-752-00	0.66	R-1	Single-Family Residential District	
FDL-15-17-12-14-753-00	0.65	R-1	Single-Family Residential District	
FDL-15-17-12-14-754-00	0.64	R-1	Single-Family Residential District	
FDL-15-17-12-14-758-00	1.97	R-1	Single-Family Residential District	
FDL-15-17-12-14-759-01	0.95	R-1	Single-Family Residential District	
FDL-15-17-12-14-760-01	0.93	R-1	Single-Family Residential District	
FDL-15-17-12-14-761-01	0.92	R-1	Single-Family Residential District	
FDL-15-17-12-14-762-02	0.44	R-1	Single-Family Residential District	
FDL-15-17-12-43-748-00	0.74	R-1	Single-Family Residential District	
FDL-15-17-13-34-768-00	0.31	R-1	Single-Family Residential District	
FDL-15-17-13-34-824-02	0.33	R-1	Single-Family Residential District	
FDL-15-17-13-41-015-00	0.38	R-1	Single-Family Residential District	
FDL-15-17-13-41-018-04	0.88	R-1	Single-Family Residential District	
FDL-15-17-13-41-024-00	0.27	R-1	Single-Family Residential District	
FDL-15-17-13-41-028-00	0.23	R-1	Single-Family Residential District	
FDL-15-17-13-41-035-00	0.23	R-1	Single-Family Residential District	
FDL-15-17-13-41-037-00	0.23	R-1	Single-Family Residential District	
FDL-15-17-13-41-038-00	0.23	R-1	Single-Family Residential District	
FDL-15-17-13-41-040-00	0.23	R-1	Single-Family Residential District	
FDL-15-17-13-41-041-00	0.23	R-1	Single-Family Residential District	
FDL-15-17-13-44-750-00	0.23	R-1	Single-Family Residential District	
FDL-15-17-13-44-753-00	0.24	R-1	Single-Family Residential District	
FDL-15-17-13-44-755-00	0.24	R-1	Single-Family Residential District	
FDL-15-17-13-44-756-00	0.24	R-1	Single-Family Residential District	

Table 5: Vacant Parcels with Residential Non-Residential Zoning

PIN	Acres	Code	Zoning - Residential	Zoning - Non-Residential
FDL-15-17-13-44-757-00	0.24	R-1	Single-Family Residential District	
FDL-15-17-13-44-758-00	0.24	R-1	Single-Family Residential District	
FDL-15-17-13-44-769-00	0.28	R-1	Single-Family Residential District	
FDL-15-17-13-44-770-00	0.28	R-1	Single-Family Residential District	
FDL-15-17-13-44-771-00	0.28	R-1	Single-Family Residential District	
FDL-15-17-13-44-772-00	0.28	R-1	Single-Family Residential District	
FDL-15-17-13-44-780-00	0.23	R-1	Single-Family Residential District	
FDL-15-17-13-44-782-00	0.25	R-1	Single-Family Residential District	
FDL-15-17-13-44-786-00	0.26	R-1	Single-Family Residential District	
FDL-15-17-13-44-788-00	0.31	R-1	Single-Family Residential District	
FDL-15-17-13-44-795-01	0.25	R-1	Single-Family Residential District	
FDL-15-17-13-44-796-01	0.20	R-1	Single-Family Residential District	
FDL-15-17-13-44-797-00	0.22	R-1	Single-Family Residential District	
FDL-15-17-13-44-802-00	0.23	R-1	Single-Family Residential District	
FDL-15-17-13-44-803-00	0.23	R-1	Single-Family Residential District	
FDL-15-17-13-44-804-00	0.22	R-1	Single-Family Residential District	
FDL-15-17-13-44-805-00	0.22	R-1	Single-Family Residential District	
FDL-15-17-13-44-806-00	0.22	R-1	Single-Family Residential District	
FDL-15-17-13-44-807-00	0.23	R-1	Single-Family Residential District	
FDL-15-17-13-44-809-00	0.26	R-1	Single-Family Residential District	
FDL-15-17-13-44-810-00	0.26	R-1	Single-Family Residential District	
FDL-15-17-13-44-811-00	0.23	R-1	Single-Family Residential District	
FDL-15-17-13-44-812-00	0.23	R-1	Single-Family Residential District	
FDL-15-17-13-44-819-00	0.22	R-1	Single-Family Residential District	
FDL-15-17-13-44-829-00	0.23	R-1	Single-Family Residential District	
FDL-15-17-13-44-831-00	0.23	R-1	Single-Family Residential District	
FDL-15-17-13-44-840-00	0.23	R-1	Single-Family Residential District	
FDL-15-17-13-44-843-00	0.22	R-1	Single-Family Residential District	
FDL-15-17-13-44-845-00	0.24	R-1	Single-Family Residential District	
FDL-15-17-13-44-848-00	0.23	R-1	Single-Family Residential District	
FDL-15-17-13-44-850-00	0.23	R-1	Single-Family Residential District	
FDL-15-17-14-11-007-00	0.25	R-1	Single-Family Residential District	
FDL-15-17-14-12-358-00	0.16	R-1	Single-Family Residential District	
FDL-15-17-14-13-507-00	0.14	R-1	Single-Family Residential District	
FDL-15-17-14-13-508-00	0.30	R-1	Single-Family Residential District	
FDL-15-17-14-13-616-00	0.17	R-1	Single-Family Residential District	
FDL-15-17-14-14-825-00	0.16	R-1	Single-Family Residential District	
FDL-15-17-14-14-829-00	0.21	R-1	Single-Family Residential District	
FDL-15-17-14-21-036-00	0.15	R-1	Single-Family Residential District	
FDL-15-17-14-23-677-00	0.90	R-1	Single-Family Residential District	
FDL-15-17-14-24-838-00	0.20	R-1	Single-Family Residential District	
FDL-15-17-14-24-914-00	0.40	R-1	Single-Family Residential District	
FDL-15-17-14-32-265-00	0.15	R-1	Single-Family Residential District	

Table 5: Vacant Parcels with Residential Non-Residential Zoning

PIN	Acres	Code	Zoning - Residential	Zoning - Non-Residential
FDL-15-17-14-32-399-00	0.17	R-1	Single-Family Residential District	
FDL-15-17-14-33-655-00	0.13	R-1	Single-Family Residential District	
FDL-15-17-14-41-067-00	0.31	R-1	Single-Family Residential District	
FDL-15-17-14-42-294-00	0.14	R-1	Single-Family Residential District	
FDL-15-17-15-13-621-01	0.27	R-1	Single-Family Residential District	
FDL-15-17-15-13-621-02	0.15	R-1	Single-Family Residential District	
FDL-15-17-15-22-282-00	0.37	R-1	Single-Family Residential District	
FDL-15-17-15-22-325-00	0.19	R-1	Single-Family Residential District	
FDL-15-17-15-23-509-00	0.08	R-1	Single-Family Residential District	
FDL-15-17-15-23-532-00	0.25	R-1	Single-Family Residential District	
FDL-15-17-15-24-772-00	0.56	R-1	Single-Family Residential District	
FDL-15-17-15-24-777-00	0.10	R-1	Single-Family Residential District	
FDL-15-17-15-24-815-00	0.25	R-1	Single-Family Residential District	
FDL-15-17-15-31-002-00	0.35	R-1	Single-Family Residential District	
FDL-15-17-15-32-300-00	0.41	R-1	Single-Family Residential District	
FDL-15-17-15-32-367-00	0.18	R-1	Single-Family Residential District	
FDL-15-17-15-42-277-00	0.18	R-1	Single-Family Residential District	
FDL-15-17-15-42-278-00	0.18	R-1	Single-Family Residential District	
FDL-15-17-15-42-279-00	0.14	R-1	Single-Family Residential District	
FDL-15-17-15-42-294-00	0.11	R-1	Single-Family Residential District	
FDL-15-17-15-43-557-00	0.54	R-1	Single-Family Residential District	
FDL-15-17-15-43-570-00	1.70	R-1	Single-Family Residential District	
FDL-15-17-15-44-791-00	0.17	R-1	Single-Family Residential District	
FDL-15-17-16-11-010-00	0.14	R-1	Single-Family Residential District	
FDL-15-17-16-11-011-00	0.14	R-1	Single-Family Residential District	
FDL-15-17-16-12-255-00	0.15	R-1	Single-Family Residential District	
FDL-15-17-16-12-307-00	0.14	R-1	Single-Family Residential District	
FDL-15-17-16-13-563-00	0.28	R-1	Single-Family Residential District	
FDL-15-17-16-14-773-00	0.22	R-1	Single-Family Residential District	
FDL-15-17-16-14-805-00	0.44	R-1	Single-Family Residential District	
FDL-15-17-16-14-806-00	0.31	R-1	Single-Family Residential District	
FDL-15-17-16-14-826-00	0.13	R-1	Single-Family Residential District	
FDL-15-17-16-41-022-02	0.15	R-1	Single-Family Residential District	
FDL-15-17-16-41-022-03	0.14	R-1	Single-Family Residential District	
FDL-15-17-16-43-500-00	0.18	R-1	Single-Family Residential District	
FDL-15-17-22-43-521-01	0.30	R-1	Single-Family Residential District	
FDL-15-17-22-44-761-00	0.22	R-1	Single-Family Residential District	
FDL-15-17-23-21-073-00	0.14	R-1	Single-Family Residential District	
FDL-15-17-23-23-501-01	0.25	R-1	Single-Family Residential District	
FDL-15-17-23-23-572-00	0.25	R-1	Single-Family Residential District	
FDL-15-17-23-23-584-01	0.10	R-1	Single-Family Residential District	
FDL-15-17-24-11-024-00	0.47	R-1	Single-Family Residential District	
FDL-15-17-24-11-040-00	0.41	R-1	Single-Family Residential District	

Table 5: Vacant Parcels with Residential Non-Residential Zoning

PIN	Acres	Code	Zoning - Residential	Zoning - Non-Residential
FDL-15-17-24-12-257-00	0.96	R-1	Single-Family Residential District	
FDL-15-17-24-12-266-00	1.23	R-1	Single-Family Residential District	
FDL-15-17-24-14-750-00	0.41	R-1	Single-Family Residential District	
FDL-15-17-24-14-751-00	0.43	R-1	Single-Family Residential District	
FDL-15-17-24-14-751-01	0.42	R-1	Single-Family Residential District	
FDL-15-17-24-14-752-00	0.42	R-1	Single-Family Residential District	
FDL-15-17-24-14-754-00	0.43	R-1	Single-Family Residential District	
FDL-15-17-24-14-756-00	0.46	R-1	Single-Family Residential District	
FDL-15-17-24-14-757-00	0.50	R-1	Single-Family Residential District	
FDL-15-17-24-21-002-00	1.25	R-1	Single-Family Residential District	
FDL-15-17-24-21-003-00	0.39	R-1	Single-Family Residential District	
FDL-15-17-24-21-010-01	0.42	R-1	Single-Family Residential District	
FDL-15-17-24-22-262-01	0.27	R-1	Single-Family Residential District	
FDL-15-17-24-23-561-00	0.43	R-1	Single-Family Residential District	
FDL-15-17-24-31-011-00	1.34	R-1	Single-Family Residential District	
FDL-15-17-24-31-012-00	0.59	R-1	Single-Family Residential District	
FDL-15-17-24-41-027-00	0.66	R-1	Single-Family Residential District	
FDL-15-17-24-41-030-00	0.70	R-1	Single-Family Residential District	
FDL-15-17-25-21-001-00	0.26	R-1	Single-Family Residential District	
FDL-15-17-25-21-008-00	0.29	R-1	Single-Family Residential District	
FDL-15-17-25-22-259-00	0.30	R-1	Single-Family Residential District	
FDL-15-17-25-22-261-00	0.31	R-1	Single-Family Residential District	
FDL-15-17-25-22-270-00	0.23	R-1	Single-Family Residential District	
FDL-15-17-25-22-272-00	0.20	R-1	Single-Family Residential District	
FDL-15-17-25-22-274-00	0.20	R-1	Single-Family Residential District	
FDL-15-17-26-11-014-00	0.48	R-1	Single-Family Residential District	
FDL-15-17-26-11-022-00	0.39	R-1	Single-Family Residential District	
FDL-15-17-26-12-320-00	0.24	R-1	Single-Family Residential District	
FDL-15-17-26-12-330-00	0.24	R-1	Single-Family Residential District	
FDL-15-17-26-12-333-00	0.32	R-1	Single-Family Residential District	
FDL-15-17-26-12-336-00	0.27	R-1	Single-Family Residential District	
FDL-15-17-26-12-341-00	0.29	R-1	Single-Family Residential District	
FDL-15-17-26-12-342-00	0.30	R-1	Single-Family Residential District	
FDL-15-17-26-13-507-00	0.28	R-1	Single-Family Residential District	
FDL-15-17-26-13-509-00	0.35	R-1	Single-Family Residential District	
FDL-15-17-26-13-515-00	0.31	R-1	Single-Family Residential District	
FDL-15-17-26-13-516-00	0.26	R-1	Single-Family Residential District	
FDL-15-17-26-13-517-00	0.26	R-1	Single-Family Residential District	
FDL-15-17-26-13-518-00	0.26	R-1	Single-Family Residential District	
FDL-15-17-26-13-524-00	0.26	R-1	Single-Family Residential District	
FDL-15-17-26-14-752-00	0.29	R-1	Single-Family Residential District	
FDL-15-17-26-21-071-00	0.29	R-1	Single-Family Residential District	
FDL-15-17-26-21-077-00	0.28	R-1	Single-Family Residential District	

Table 5: Vacant Parcels with Residential Non-Residential Zoning

PIN	Acres	Code	Zoning - Residential	Zoning - Non-Residential
FDL-15-17-26-21-083-00	0.29	R-1	Single-Family Residential District	
FDL-15-17-26-21-085-00	0.28	R-1	Single-Family Residential District	
FDL-15-17-26-41-028-00	0.31	R-1	Single-Family Residential District	
FDL-15-17-26-41-035-00	0.27	R-1	Single-Family Residential District	
FDL-15-17-26-42-257-00	0.31	R-1	Single-Family Residential District	
FDL-15-18-05-34-757-00	0.77	R-1	Single-Family Residential District	
FDL-15-18-05-34-760-00	0.87	R-1	Single-Family Residential District	
FDL-15-18-05-43-503-00	0.64	R-1	Single-Family Residential District	
FDL-15-18-05-43-504-00	0.48	R-1	Single-Family Residential District	
FDL-15-18-05-43-505-00	0.49	R-1	Single-Family Residential District	
FDL-15-18-05-43-515-00	0.46	R-1	Single-Family Residential District	
FDL-15-18-05-43-516-00	0.46	R-1	Single-Family Residential District	
FDL-15-18-05-43-517-00	0.48	R-1	Single-Family Residential District	
FDL-15-18-05-43-520-00	18.19	R-1	Single-Family Residential District	
FDL-15-18-06-11-001-00	0.52	R-1	Single-Family Residential District	
FDL-15-18-06-11-002-00	0.60	R-1	Single-Family Residential District	
FDL-15-18-06-11-003-00	0.76	R-1	Single-Family Residential District	
FDL-15-18-06-11-004-00	0.82	R-1	Single-Family Residential District	
FDL-15-18-06-11-005-00	3.78	R-1	Single-Family Residential District	
FDL-15-18-06-11-007-00	0.52	R-1	Single-Family Residential District	
FDL-15-18-06-11-010-00	0.45	R-1	Single-Family Residential District	
FDL-15-18-06-11-013-00	2.25	R-1	Single-Family Residential District	
FDL-15-18-06-11-014-00	0.46	R-1	Single-Family Residential District	
FDL-15-18-06-11-017-00	0.58	R-1	Single-Family Residential District	
FDL-15-18-06-11-018-00	0.65	R-1	Single-Family Residential District	
FDL-15-18-06-11-019-00	0.63	R-1	Single-Family Residential District	
FDL-15-18-06-11-020-00	0.48	R-1	Single-Family Residential District	
FDL-15-18-06-11-021-00	0.52	R-1	Single-Family Residential District	
FDL-15-18-06-11-022-00	0.47	R-1	Single-Family Residential District	
FDL-15-18-06-11-024-00	1.06	R-1	Single-Family Residential District	
FDL-15-18-06-11-026-00	0.44	R-1	Single-Family Residential District	
FDL-15-18-06-11-028-00	0.52	R-1	Single-Family Residential District	
FDL-15-18-06-11-029-00	0.55	R-1	Single-Family Residential District	
FDL-15-18-06-11-030-00	0.60	R-1	Single-Family Residential District	
FDL-15-18-06-11-031-00	0.50	R-1	Single-Family Residential District	
FDL-15-18-06-11-032-00	0.30	R-1	Single-Family Residential District	
FDL-15-18-06-12-252-00	0.44	R-1	Single-Family Residential District	
FDL-15-18-06-12-253-00	0.42	R-1	Single-Family Residential District	
FDL-15-18-06-12-262-00	0.31	R-1	Single-Family Residential District	
FDL-15-18-06-12-263-00	0.38	R-1	Single-Family Residential District	
FDL-15-18-06-12-265-00	0.39	R-1	Single-Family Residential District	
FDL-15-18-06-12-266-00	0.43	R-1	Single-Family Residential District	
FDL-15-18-06-12-267-00	0.41	R-1	Single-Family Residential District	

Table 5: Vacant Parcels with Residential Non-Residential Zoning

PIN	Acres	Code	Zoning - Residential	Zoning - Non-Residential
FDL-15-18-06-12-268-00	0.44	R-1	Single-Family Residential District	
FDL-15-18-06-12-269-00	0.34	R-1	Single-Family Residential District	
FDL-15-18-06-12-270-00	0.30	R-1	Single-Family Residential District	
FDL-15-18-06-12-271-00	0.32	R-1	Single-Family Residential District	
FDL-15-18-06-12-272-00	8.63	R-1	Single-Family Residential District	
FDL-15-18-06-34-750-00	0.51	R-1	Single-Family Residential District	
FDL-15-18-06-34-751-00	0.36	R-1	Single-Family Residential District	
FDL-15-18-06-34-752-00	0.30	R-1	Single-Family Residential District	
FDL-15-18-06-34-753-00	0.27	R-1	Single-Family Residential District	
FDL-15-18-06-34-754-00	0.26	R-1	Single-Family Residential District	
FDL-15-18-06-34-755-00	0.26	R-1	Single-Family Residential District	
FDL-15-18-06-34-756-00	0.26	R-1	Single-Family Residential District	
FDL-15-18-06-34-757-00	0.26	R-1	Single-Family Residential District	
FDL-15-18-06-34-758-00	0.26	R-1	Single-Family Residential District	
FDL-15-18-06-34-759-00	0.26	R-1	Single-Family Residential District	
FDL-15-18-06-34-760-00	0.26	R-1	Single-Family Residential District	
FDL-15-18-06-34-761-00	0.26	R-1	Single-Family Residential District	
FDL-15-18-06-34-762-00	0.26	R-1	Single-Family Residential District	
FDL-15-18-06-34-763-00	0.26	R-1	Single-Family Residential District	
FDL-15-18-06-34-764-00	0.29	R-1	Single-Family Residential District	
FDL-15-18-06-34-765-00	0.30	R-1	Single-Family Residential District	
FDL-15-18-06-34-766-00	0.25	R-1	Single-Family Residential District	
FDL-15-18-06-34-767-00	0.25	R-1	Single-Family Residential District	
FDL-15-18-06-34-768-00	0.30	R-1	Single-Family Residential District	
FDL-15-18-06-34-769-00	0.26	R-1	Single-Family Residential District	
FDL-15-18-06-34-770-00	0.23	R-1	Single-Family Residential District	
FDL-15-18-06-34-771-00	0.23	R-1	Single-Family Residential District	
FDL-15-18-06-34-772-00	0.23	R-1	Single-Family Residential District	
FDL-15-18-06-34-773-00	0.26	R-1	Single-Family Residential District	
FDL-15-18-06-34-774-00	0.26	R-1	Single-Family Residential District	
FDL-15-18-06-34-775-00	0.26	R-1	Single-Family Residential District	
FDL-15-18-06-34-778-00	0.35	R-1	Single-Family Residential District	
FDL-15-18-06-34-779-00	0.23	R-1	Single-Family Residential District	
FDL-15-18-06-34-780-00	0.23	R-1	Single-Family Residential District	
FDL-15-18-06-34-781-00	0.23	R-1	Single-Family Residential District	
FDL-15-18-06-34-794-00	0.27	R-1	Single-Family Residential District	
FDL-15-18-06-34-795-00	0.28	R-1	Single-Family Residential District	
FDL-15-18-06-34-796-00	0.28	R-1	Single-Family Residential District	
FDL-15-18-06-34-797-00	0.28	R-1	Single-Family Residential District	
FDL-15-18-06-34-798-00	0.29	R-1	Single-Family Residential District	
FDL-15-18-06-34-799-00	0.28	R-1	Single-Family Residential District	
FDL-15-18-06-34-800-00	0.31	R-1	Single-Family Residential District	
FDL-15-18-06-34-801-00	0.23	R-1	Single-Family Residential District	

Table 5: Vacant Parcels with Residential Non-Residential Zoning

PIN	Acres	Code	Zoning - Residential	Zoning - Non-Residential
FDL-15-18-06-34-802-00	0.23	R-1	Single-Family Residential District	
FDL-15-18-06-34-803-00	0.29	R-1	Single-Family Residential District	
FDL-15-18-06-34-804-00	0.31	R-1	Single-Family Residential District	
FDL-15-18-06-34-805-00	0.23	R-1	Single-Family Residential District	
FDL-15-18-06-34-806-00	0.24	R-1	Single-Family Residential District	
FDL-15-18-06-34-807-00	0.24	R-1	Single-Family Residential District	
FDL-15-18-06-34-808-00	0.24	R-1	Single-Family Residential District	
FDL-15-18-06-34-809-00	0.24	R-1	Single-Family Residential District	
FDL-15-18-06-34-810-00	0.24	R-1	Single-Family Residential District	
FDL-15-18-06-34-811-00	0.24	R-1	Single-Family Residential District	
FDL-15-18-06-34-812-00	0.35	R-1	Single-Family Residential District	
FDL-15-18-06-34-813-00	0.25	R-1	Single-Family Residential District	
FDL-15-18-06-34-814-00	0.37	R-1	Single-Family Residential District	
FDL-15-18-06-34-815-00	0.24	R-1	Single-Family Residential District	
FDL-15-18-06-34-816-00	0.24	R-1	Single-Family Residential District	
FDL-15-18-06-34-817-00	0.24	R-1	Single-Family Residential District	
FDL-15-18-06-34-818-00	0.24	R-1	Single-Family Residential District	
FDL-15-18-06-34-819-00	0.24	R-1	Single-Family Residential District	
FDL-15-18-06-34-820-00	0.30	R-1	Single-Family Residential District	
FDL-15-18-06-34-821-00	0.52	R-1	Single-Family Residential District	
FDL-15-18-06-34-822-00	0.51	R-1	Single-Family Residential District	
FDL-15-18-06-34-823-00	0.42	R-1	Single-Family Residential District	
FDL-15-18-06-34-824-00	0.33	R-1	Single-Family Residential District	
FDL-15-18-06-34-825-00	0.29	R-1	Single-Family Residential District	
FDL-15-18-06-34-826-00	0.28	R-1	Single-Family Residential District	
FDL-15-18-06-34-827-00	0.38	R-1	Single-Family Residential District	
FDL-15-18-06-34-828-00	0.41	R-1	Single-Family Residential District	
FDL-15-18-06-34-829-00	0.37	R-1	Single-Family Residential District	
FDL-15-18-06-34-830-00	0.38	R-1	Single-Family Residential District	
FDL-15-18-06-34-831-00	0.37	R-1	Single-Family Residential District	
FDL-15-18-06-34-832-00	0.34	R-1	Single-Family Residential District	
FDL-15-18-06-34-833-00	0.34	R-1	Single-Family Residential District	
FDL-15-18-06-34-839-00	0.36	R-1	Single-Family Residential District	
FDL-15-18-06-34-840-00	0.52	R-1	Single-Family Residential District	
FDL-15-18-06-34-841-00	0.55	R-1	Single-Family Residential District	
FDL-15-18-06-34-842-00	0.40	R-1	Single-Family Residential District	
FDL-15-18-06-34-843-00	0.31	R-1	Single-Family Residential District	
FDL-15-18-06-34-844-00	0.26	R-1	Single-Family Residential District	
FDL-15-18-06-34-845-00	0.26	R-1	Single-Family Residential District	
FDL-15-18-06-34-846-00	0.35	R-1	Single-Family Residential District	
FDL-15-18-06-34-847-00	0.33	R-1	Single-Family Residential District	
FDL-15-18-06-34-848-00	0.25	R-1	Single-Family Residential District	
FDL-15-18-06-34-849-00	0.23	R-1	Single-Family Residential District	

Table 5: Vacant Parcels with Residential Non-Residential Zoning

PIN	Acres	Code	Zoning - Residential	Zoning - Non-Residential
FDL-15-18-06-34-850-00	0.23	R-1	Single-Family Residential District	
FDL-15-18-06-34-851-00	0.23	R-1	Single-Family Residential District	
FDL-15-18-06-34-852-00	0.23	R-1	Single-Family Residential District	
FDL-15-18-06-34-853-00	0.23	R-1	Single-Family Residential District	
FDL-15-18-06-34-854-00	0.24	R-1	Single-Family Residential District	
FDL-15-18-06-43-500-00	0.29	R-1	Single-Family Residential District	
FDL-15-18-06-43-501-00	0.23	R-1	Single-Family Residential District	
FDL-15-18-06-43-502-00	0.23	R-1	Single-Family Residential District	
FDL-15-18-06-43-503-00	0.24	R-1	Single-Family Residential District	
FDL-15-18-06-43-504-00	0.24	R-1	Single-Family Residential District	
FDL-15-18-06-43-505-00	0.24	R-1	Single-Family Residential District	
FDL-15-18-06-43-506-00	0.26	R-1	Single-Family Residential District	
FDL-15-18-06-43-507-00	0.34	R-1	Single-Family Residential District	
FDL-15-18-06-43-508-00	0.29	R-1	Single-Family Residential District	
FDL-15-18-06-43-514-00	0.33	R-1	Single-Family Residential District	
FDL-15-18-06-43-515-00	0.23	R-1	Single-Family Residential District	
FDL-15-18-06-43-516-00	0.23	R-1	Single-Family Residential District	
FDL-15-18-06-43-517-00	0.23	R-1	Single-Family Residential District	
FDL-15-18-06-43-518-00	0.23	R-1	Single-Family Residential District	
FDL-15-18-06-43-519-00	0.23	R-1	Single-Family Residential District	
FDL-15-18-06-43-520-00	0.29	R-1	Single-Family Residential District	
FDL-15-18-06-43-521-00	0.32	R-1	Single-Family Residential District	
FDL-15-18-06-43-522-00	0.25	R-1	Single-Family Residential District	
FDL-15-18-06-43-523-00	0.25	R-1	Single-Family Residential District	
FDL-15-18-06-43-524-00	0.25	R-1	Single-Family Residential District	
FDL-15-18-06-43-525-00	0.25	R-1	Single-Family Residential District	
FDL-15-18-06-43-526-00	0.36	R-1	Single-Family Residential District	
FDL-15-18-07-11-002-00	8.20	R-1	Single-Family Residential District	
FDL-15-18-07-11-008-00	1.00	R-1	Single-Family Residential District	
FDL-15-18-07-14-750-00	6.89	R-1	Single-Family Residential District	
FDL-15-18-07-14-751-02	6.47	R-1	Single-Family Residential District	
FDL-15-18-07-41-010-00	9.90	R-1	Single-Family Residential District	
FDL-15-18-07-44-750-00	0.78	R-1	Single-Family Residential District	
FDL-15-18-07-44-758-00	14.19	R-1	Single-Family Residential District	
FDL-15-18-08-22-253-00	0.66	R-1	Single-Family Residential District	
FDL-15-18-08-23-748-00	0.99	R-1	Single-Family Residential District	
FDL-15-18-08-32-250-00	6.57	R-1	Single-Family Residential District	
FDL-15-18-18-24-809-00	3.21	R-1	Single-Family Residential District	
FDL-15-18-18-24-999-01	63.63	R-1	Single-Family Residential District	
R-1 Total	304.99			
FDL-15-17-01-43-513-00	0.97	R-2	Two-Family Residential District	
FDL-15-17-01-44-782-00	0.43	R-2	Two-Family Residential District	
FDL-15-17-01-44-783-00	0.43	R-2	Two-Family Residential District	

Table 5: Vacant Parcels with Residential Non-Residential Zoning

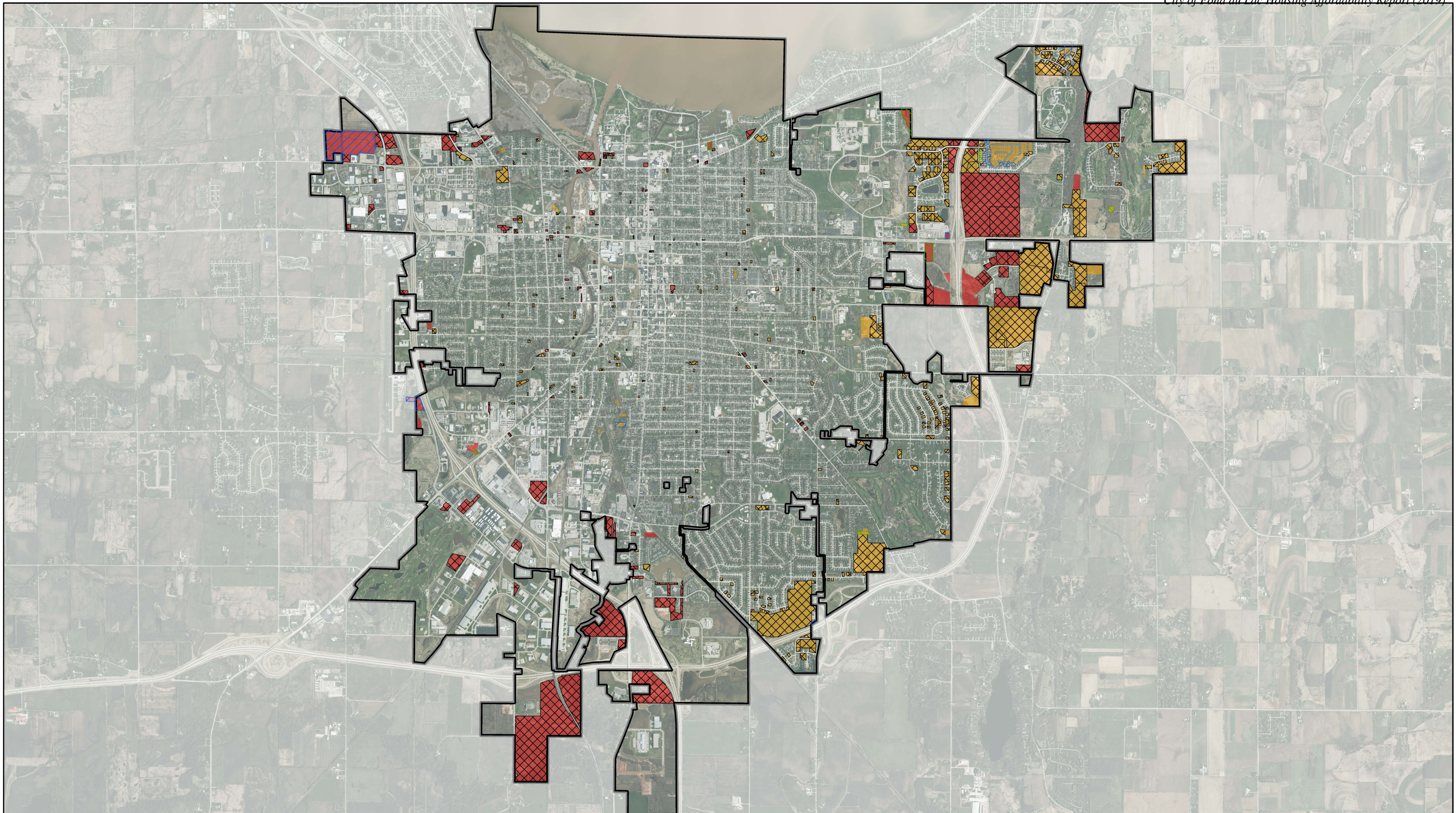
PIN	Acres	Code	Zoning - Residential	Zoning - Non-Residential
FDL-15-17-01-44-785-00	0.43	R-2	Two-Family Residential District	
FDL-15-17-01-44-786-00	0.43	R-2	Two-Family Residential District	
FDL-15-17-01-44-787-00	0.43	R-2	Two-Family Residential District	
FDL-15-17-01-44-997-00	11.17	R-2	Two-Family Residential District	
FDL-15-17-03-34-771-00	0.17	R-2	Two-Family Residential District	
FDL-15-17-10-11-111-00	0.22	R-2	Two-Family Residential District	
FDL-15-17-10-11-113-00	0.14	R-2	Two-Family Residential District	
FDL-15-17-13-44-760-00	0.24	R-2	Two-Family Residential District	
FDL-15-17-13-44-764-01	0.27	R-2	Two-Family Residential District	
FDL-15-17-15-32-344-00	0.18	R-2	Two-Family Residential District	
FDL-15-17-15-32-347-00	0.18	R-2	Two-Family Residential District	
FDL-15-17-22-44-998-00	1.31	R-2	Two-Family Residential District	
FDL-15-17-23-42-255-00	0.95	R-2	Two-Family Residential District	
FDL-15-17-26-11-249-02	67.90	R-2	Two-Family Residential District	
FDL-15-17-26-13-528-00	0.27	R-2	Two-Family Residential District	
FDL-15-17-26-14-751-00	0.29	R-2	Two-Family Residential District	
FDL-15-17-26-41-001-00	1.05	R-2	Two-Family Residential District	
FDL-15-17-26-41-007-01	0.95	R-2	Two-Family Residential District	
FDL-15-17-26-41-020-00	1.31	R-2	Two-Family Residential District	
FDL-15-17-99-LI-010-00	4.91	R-2	Two-Family Residential District	
FDL-15-17-99-LI-020-00	4.91	R-2	Two-Family Residential District	
FDL-15-17-99-LI-030-00	4.91	R-2	Two-Family Residential District	
FDL-15-17-99-LI-040-00	4.91	R-2	Two-Family Residential District	
FDL-15-17-99-LI-050-00	4.91	R-2	Two-Family Residential District	
FDL-15-17-99-LI-060-00	4.91	R-2	Two-Family Residential District	
FDL-15-17-99-LI-070-00	4.91	R-2	Two-Family Residential District	
FDL-15-17-99-LI-080-00	4.91	R-2	Two-Family Residential District	
FDL-15-17-99-LI-090-00	4.91	R-2	Two-Family Residential District	
FDL-15-17-99-LI-100-00	4.91	R-2	Two-Family Residential District	
FDL-15-17-99-LI-110-00	4.91	R-2	Two-Family Residential District	
FDL-15-17-99-LI-120-00	4.91	R-2	Two-Family Residential District	
FDL-15-18-05-33-544-00	0.78	R-2	Two-Family Residential District	
FDL-15-18-05-33-545-00	0.76	R-2	Two-Family Residential District	
FDL-15-18-05-33-547-00	0.60	R-2	Two-Family Residential District	
FDL-15-18-05-33-549-00	0.74	R-2	Two-Family Residential District	
FDL-15-18-06-12-254-00	0.42	R-2	Two-Family Residential District	
FDL-15-18-06-12-255-00	0.58	R-2	Two-Family Residential District	
FDL-15-18-06-12-256-00	0.93	R-2	Two-Family Residential District	
FDL-15-18-06-12-257-00	0.60	R-2	Two-Family Residential District	
FDL-15-18-06-12-260-00	0.44	R-2	Two-Family Residential District	
FDL-15-18-06-33-500-00	0.33	R-2	Two-Family Residential District	
FDL-15-18-06-33-501-00	0.33	R-2	Two-Family Residential District	
FDL-15-18-06-33-502-00	0.42	R-2	Two-Family Residential District	

Table 5: Vacant Parcels with Residential Non-Residential Zoning

PIN	Acres	Code	Zoning - Residential	Zoning - Non-Residential
FDL-15-18-06-33-503-00	0.33	R-2	Two-Family Residential District	
FDL-15-18-06-33-504-00	0.27	R-2	Two-Family Residential District	
FDL-15-18-06-33-505-00	0.26	R-2	Two-Family Residential District	
FDL-15-18-06-33-506-00	0.25	R-2	Two-Family Residential District	
FDL-15-18-06-33-507-00	0.25	R-2	Two-Family Residential District	
FDL-15-18-06-33-508-00	0.24	R-2	Two-Family Residential District	
FDL-15-18-06-33-509-00	0.24	R-2	Two-Family Residential District	
FDL-15-18-06-33-510-00	0.24	R-2	Two-Family Residential District	
R-2 Total	157.61			
FDL-15-17-10-34-822-00	0.32	R-3	Residential-Central Area District	
FDL-15-17-11-33-563-00	0.22	R-3	Residential-Central Area District	
FDL-15-17-11-33-582-00	0.17	R-3	Residential-Central Area District	
FDL-15-17-15-13-610-00	0.06	R-3	Residential-Central Area District	
FDL-15-17-15-21-003-00	0.19	R-3	Residential-Central Area District	
R-3 Total	0.96			
FDL-15-17-02-42-281-01	2.48	R-4	Multi-Family Residential District	
FDL-15-17-04-34-775-00	2.21	R-4	Multi-Family Residential District	
FDL-15-17-09-12-262-01	6.24	R-4	Multi-Family Residential District	
FDL-15-17-10-12-379-00	0.11	R-4	Multi-Family Residential District	
FDL-15-17-10-13-511-00	0.11	R-4	Multi-Family Residential District	
FDL-15-17-10-41-036-00	0.05	R-4	Multi-Family Residential District	
FDL-15-17-10-41-054-00	0.05	R-4	Multi-Family Residential District	
FDL-15-17-10-42-260-00	0.10	R-4	Multi-Family Residential District	
FDL-15-17-11-32-316-00	0.07	R-4	Multi-Family Residential District	
FDL-15-17-11-44-759-00	0.15	R-4	Multi-Family Residential District	
FDL-15-17-11-44-760-00	0.14	R-4	Multi-Family Residential District	
FDL-15-17-13-21-004-00	1.13	R-4	Multi-Family Residential District	
FDL-15-17-13-21-044-00	7.56	R-4	Multi-Family Residential District	
FDL-15-17-13-21-045-00	7.56	R-4	Multi-Family Residential District	
FDL-15-17-13-21-046-00	7.56	R-4	Multi-Family Residential District	
FDL-15-17-13-21-047-00	7.56	R-4	Multi-Family Residential District	
FDL-15-17-13-21-048-00	7.56	R-4	Multi-Family Residential District	
FDL-15-17-13-21-049-00	7.56	R-4	Multi-Family Residential District	
FDL-15-17-13-21-050-00	7.56	R-4	Multi-Family Residential District	
FDL-15-17-13-21-051-00	7.56	R-4	Multi-Family Residential District	
FDL-15-17-13-21-052-00	7.56	R-4	Multi-Family Residential District	
FDL-15-17-13-21-053-00	7.56	R-4	Multi-Family Residential District	
FDL-15-17-13-21-054-00	7.56	R-4	Multi-Family Residential District	
FDL-15-17-13-21-055-00	7.56	R-4	Multi-Family Residential District	
FDL-15-17-13-21-056-00	7.56	R-4	Multi-Family Residential District	
FDL-15-17-13-21-057-00	7.56	R-4	Multi-Family Residential District	
FDL-15-17-13-21-058-00	7.56	R-4	Multi-Family Residential District	
FDL-15-17-13-21-059-00	7.56	R-4	Multi-Family Residential District	

Table 5: Vacant Parcels with Residential Non-Residential Zoning

PIN	Acres	Code	Zoning - Residential	Zoning - Non-Residential
FDL-15-17-13-21-060-00	7.56	R-4	Multi-Family Residential District	
FDL-15-17-13-21-061-00	7.56	R-4	Multi-Family Residential District	
FDL-15-17-13-21-062-00	7.56	R-4	Multi-Family Residential District	
FDL-15-17-13-21-063-00	7.56	R-4	Multi-Family Residential District	
FDL-15-17-13-21-064-00	7.56	R-4	Multi-Family Residential District	
FDL-15-17-13-21-065-00	7.56	R-4	Multi-Family Residential District	
FDL-15-17-13-21-066-00	7.56	R-4	Multi-Family Residential District	
FDL-15-17-13-21-067-00	7.56	R-4	Multi-Family Residential District	
FDL-15-17-13-21-068-00	7.56	R-4	Multi-Family Residential District	
FDL-15-17-13-21-069-00	7.56	R-4	Multi-Family Residential District	
FDL-15-17-13-21-070-00	7.56	R-4	Multi-Family Residential District	
FDL-15-17-13-21-071-00	7.56	R-4	Multi-Family Residential District	
FDL-15-17-13-21-072-00	5.39	R-4	Multi-Family Residential District	
FDL-15-17-13-21-074-00	1.29	R-4	Multi-Family Residential District	
FDL-15-17-13-31-003-00	0.28	R-4	Multi-Family Residential District	
FDL-15-17-13-31-005-00	0.88	R-4	Multi-Family Residential District	
FDL-15-17-13-42-266-00	0.50	R-4	Multi-Family Residential District	
FDL-15-17-15-34-820-00	0.35	R-4	Multi-Family Residential District	
FDL-15-17-16-22-269-00	0.65	R-4	Multi-Family Residential District	
FDL-15-17-16-41-025-00	1.40	R-4	Multi-Family Residential District	
FDL-15-17-16-41-025-17	0.12	R-4	Multi-Family Residential District	
FDL-15-17-23-42-253-00	0.48	R-4	Multi-Family Residential District	
FDL-15-17-23-42-254-00	0.67	R-4	Multi-Family Residential District	
FDL-15-17-24-34-999-00	34.17	R-4	Multi-Family Residential District	
FDL-15-17-26-41-003-00	0.53	R-4	Multi-Family Residential District	
FDL-15-18-06-33-513-00	4.54	R-4	Multi-Family Residential District	
FDL-15-18-06-33-523-01	7.79	R-4	Multi-Family Residential District	
FDL-15-18-07-42-250-02	24.26	R-4	Multi-Family Residential District	
FDL-15-18-07-43-250-02	30.17	R-4	Multi-Family Residential District	
FDL-15-18-18-32-497-01	5.79	R-4	Multi-Family Residential District	
FDL-15-18-18-32-498-00	5.94	R-4	Multi-Family Residential District	
FDL-15-18-18-32-499-00	0.24	R-4	Multi-Family Residential District	
R-4 Total	349.98			
FDL-15-17-04-44-849-00	0.10	S-W		Shoreland-Wetland District
FDL-15-18-07-32-499-00	7.45	S-W		Shoreland-Wetland District
S-W Total	7.56			
Grand Total	1472.8		Residential Total - 529	Non Res. Total - 140



SERVICES AVAILABLE

MAP 2

VACANT PARCELS (669)

- RESIDENTIAL (529)
- NON-RESIDENTIAL (140)

ACCESS TO SERVICES

- WATER ACCESS (505)
- SEWER ACCESS (490)
- BOTH WATER & SEWER ACCESS (477)

DISCLAIMER

THE CITY OF FOND DU LAC CREATES AND MAINTAINS GEOSPATIAL PRODUCTS FOR ITS OWN USE. THESE RESOURCES ARE NOT INTENDED TO BE USED FOR LEGAL, ENGINEERING, OR SURVEY PURPOSES, AND ARE PROVIDED "AS-IS" WITHOUT WARRANTY OF ANY KIND. THE CITY OF FOND DU LAC ASSUMES NO LIABILITY FOR THE ACCURACY, CORRECTNESS, OR USE OF THESE PRODUCTS.



Table 6: Parcels with Utility Access

PIN	Acres	Code	Zoning	Water	Sewer
FDL-15-17-01-42-499-00	5.45	A	Agricultural District	No	Yes
FDL-15-17-05-43-500-00	2.10	A	Agricultural District	Yes	Yes
FDL-15-17-05-43-502-00	27.34	A	Agricultural District	Yes	No
FDL-15-17-12-41-248-00	5.72	A	Agricultural District	No	Yes
FDL-15-17-12-44-998-00	7.58	A	Agricultural District	Yes	Yes
FDL-15-18-05-31-001-01	0.36	A	Agricultural District	Yes	Yes
FDL-15-18-05-32-250-00	26.38	A	Agricultural District	Yes	Yes
FDL-15-18-07-24-750-00	30.20	A	Agricultural District	Yes	Yes
FDL-15-18-07-24-751-00	1.88	A	Agricultural District	Yes	Yes
FDL-15-18-07-24-999-01	97.65	A	Agricultural District	Yes	Yes
A Total	204.65				
FDL-15-17-02-33-530-00	0.25	C-2	General Business District	Yes	Yes
FDL-15-17-02-33-534-00	0.29	C-2	General Business District	Yes	Yes
FDL-15-17-03-34-796-00	4.20	C-2	General Business District	Yes	Yes
FDL-15-17-03-43-510-02	0.58	C-2	General Business District	Yes	Yes
FDL-15-17-04-34-755-00	6.93	C-2	General Business District	Yes	Yes
FDL-15-17-04-43-503-00	0.98	C-2	General Business District	Yes	Yes
FDL-15-17-04-43-503-01	0.67	C-2	General Business District	Yes	Yes
FDL-15-17-04-43-528-00	1.09	C-2	General Business District	Yes	Yes
FDL-15-17-05-44-750-00	3.99	C-2	General Business District	Yes	Yes
FDL-15-17-05-44-750-01	2.32	C-2	General Business District	Yes	Yes
FDL-15-17-05-44-751-00	2.92	C-2	General Business District	Yes	Yes
FDL-15-17-05-44-754-00	5.06	C-2	General Business District	Yes	Yes
FDL-15-17-08-11-007-01	0.34	C-2	General Business District	Yes	Yes
FDL-15-17-08-11-008-01	0.49	C-2	General Business District	Yes	Yes
FDL-15-17-08-13-501-05	1.45	C-2	General Business District	Yes	Yes
FDL-15-17-08-13-504-00	0.96	C-2	General Business District	Yes	Yes
FDL-15-17-08-44-763-00	1.37	C-2	General Business District	Yes	Yes
FDL-15-17-09-13-508-00	1.63	C-2	General Business District	Yes	Yes
FDL-15-17-09-13-512-00	0.27	C-2	General Business District	Yes	Yes
FDL-15-17-09-14-760-00	0.32	C-2	General Business District	Yes	Yes
FDL-15-17-09-14-786-00	0.54	C-2	General Business District	Yes	Yes
FDL-15-17-10-12-323-00	0.18	C-2	General Business District	Yes	Yes
FDL-15-17-10-12-325-00	0.10	C-2	General Business District	Yes	Yes
FDL-15-17-10-14-773-00	0.14	C-2	General Business District	Yes	Yes
FDL-15-17-10-23-514-00	0.07	C-2	General Business District	Yes	Yes
FDL-15-17-10-23-515-00	0.11	C-2	General Business District	Yes	Yes
FDL-15-17-10-23-525-00	0.14	C-2	General Business District	Yes	Yes
FDL-15-17-10-23-547-00	0.07	C-2	General Business District	Yes	Yes
FDL-15-17-10-23-548-00	0.13	C-2	General Business District	Yes	Yes
FDL-15-17-10-32-274-00	0.14	C-2	General Business District	Yes	Yes
FDL-15-17-10-32-341-00	0.26	C-2	General Business District	Yes	Yes
FDL-15-17-10-32-345-00	0.13	C-2	General Business District	Yes	Yes

Table 6: Parcels with Utility Access

PIN	Acres	Code	Zoning	Water	Sewer
FDL-15-17-10-33-617-00	0.24	C-2	General Business District	Yes	Yes
FDL-15-17-10-33-630-00	0.06	C-2	General Business District	Yes	Yes
FDL-15-17-10-33-647-00	0.14	C-2	General Business District	Yes	Yes
FDL-15-17-10-41-019-00	0.11	C-2	General Business District	Yes	Yes
FDL-15-17-10-41-070-00	0.06	C-2	General Business District	Yes	Yes
FDL-15-17-10-41-071-00	0.15	C-2	General Business District	Yes	Yes
FDL-15-17-10-41-072-00	0.04	C-2	General Business District	Yes	Yes
FDL-15-17-12-13-513-00	2.47	C-2	General Business District	Yes	Yes
FDL-15-17-12-14-767-00	0.98	C-2	General Business District	Yes	No
FDL-15-17-12-42-250-01	0.78	C-2	General Business District	Yes	Yes
FDL-15-17-14-24-836-00	0.24	C-2	General Business District	Yes	Yes
FDL-15-17-14-24-837-00	0.22	C-2	General Business District	Yes	Yes
FDL-15-17-14-42-299-00	0.21	C-2	General Business District	Yes	Yes
FDL-15-17-14-44-766-00	0.21	C-2	General Business District	Yes	Yes
FDL-15-17-14-44-767-00	0.21	C-2	General Business District	Yes	Yes
FDL-15-17-14-44-768-01	0.31	C-2	General Business District	Yes	Yes
FDL-15-17-14-44-775-00	0.33	C-2	General Business District	Yes	Yes
FDL-15-17-15-32-324-00	0.27	C-2	General Business District	Yes	Yes
FDL-15-17-15-42-320-00	0.10	C-2	General Business District	Yes	Yes
FDL-15-17-16-14-801-00	0.28	C-2	General Business District	Yes	Yes
FDL-15-17-16-23-525-00	0.61	C-2	General Business District	Yes	Yes
FDL-15-17-16-23-526-00	0.24	C-2	General Business District	Yes	Yes
FDL-15-17-16-33-501-00	4.62	C-2	General Business District	Yes	No
FDL-15-17-16-43-525-00	0.26	C-2	General Business District	Yes	Yes
FDL-15-17-21-14-751-01	1.26	C-2	General Business District	Yes	Yes
FDL-15-17-21-14-752-01	9.15	C-2	General Business District	Yes	Yes
FDL-15-17-21-21-001-02	0.80	C-2	General Business District	No	Yes
FDL-15-17-21-31-010-00	5.10	C-2	General Business District	Yes	Yes
FDL-15-17-21-44-756-00	2.73	C-2	General Business District	Yes	Yes
FDL-15-17-22-31-011-01	7.14	C-2	General Business District	Yes	Yes
FDL-15-17-22-42-251-00	0.09	C-2	General Business District	Yes	Yes
FDL-15-17-22-42-268-00	0.60	C-2	General Business District	Yes	Yes
FDL-15-17-22-43-505-00	0.86	C-2	General Business District	Yes	Yes
FDL-15-17-22-43-509-00	0.88	C-2	General Business District	Yes	Yes
FDL-15-17-26-14-997-00	0.38	C-2	General Business District	Yes	No
FDL-15-17-27-12-253-01	1.18	C-2	General Business District	Yes	Yes
FDL-15-17-27-31-249-06	2.71	C-2	General Business District	Yes	Yes
FDL-15-17-27-44-999-00	33.24	C-2	General Business District	Yes	Yes
FDL-15-18-06-33-529-01	1.17	C-2	General Business District	Yes	Yes
FDL-15-18-06-33-530-01	2.48	C-2	General Business District	Yes	Yes
FDL-15-18-06-33-531-00	1.48	C-2	General Business District	Yes	Yes
FDL-15-18-06-33-532-00	1.26	C-2	General Business District	Yes	Yes
FDL-15-18-07-31-004-01	1.28	C-2	General Business District	Yes	Yes

Table 6: Parcels with Utility Access

PIN	Acres	Code	Zoning	Water	Sewer
FDL-15-18-18-13-500-01	4.06	C-2	General Business District	Yes	Yes
C-2 Total	129.11				
FDL-15-17-02-42-280-00	1.73	C-R	Commercial-Recreation District	Yes	Yes
FDL-15-17-03-34-764-00	0.23	C-R	Commercial-Recreation District	Yes	Yes
FDL-15-17-03-34-765-00	0.05	C-R	Commercial-Recreation District	Yes	Yes
FDL-15-17-03-34-766-00	0.22	C-R	Commercial-Recreation District	Yes	Yes
FDL-15-17-03-34-768-00	0.81	C-R	Commercial-Recreation District	Yes	Yes
FDL-15-17-03-34-775-00	0.26	C-R	Commercial-Recreation District	Yes	Yes
FDL-15-17-03-34-776-00	0.04	C-R	Commercial-Recreation District	Yes	Yes
FDL-15-17-10-21-052-00	0.79	C-R	Commercial-Recreation District	Yes	Yes
FDL-15-17-10-22-251-00	0.17	C-R	Commercial-Recreation District	Yes	Yes
FDL-15-17-10-22-252-00	0.45	C-R	Commercial-Recreation District	Yes	Yes
C-R Total	4.75				
FDL-15-17-04-34-752-00	1.44	M-1	Industrial District	Yes	Yes
FDL-15-17-05-34-750-00	16.68	M-1	Industrial District	Yes	No
FDL-15-17-10-23-584-01	0.13	M-1	Industrial District	Yes	Yes
FDL-15-17-10-24-765-00	0.50	M-1	Industrial District	Yes	Yes
FDL-15-17-10-24-766-00	0.29	M-1	Industrial District	Yes	Yes
FDL-15-17-10-24-803-00	0.08	M-1	Industrial District	Yes	Yes
FDL-15-17-10-31-045-00	0.17	M-1	Industrial District	Yes	Yes
FDL-15-17-10-33-501-00	0.10	M-1	Industrial District	Yes	Yes
FDL-15-17-10-33-502-00	0.11	M-1	Industrial District	Yes	Yes
FDL-15-17-10-33-506-00	0.22	M-1	Industrial District	Yes	Yes
FDL-15-17-10-34-759-00	0.18	M-1	Industrial District	Yes	Yes
FDL-15-17-10-34-789-00	0.10	M-1	Industrial District	Yes	Yes
FDL-15-17-16-43-520-00	0.57	M-1	Industrial District	Yes	Yes
FDL-15-17-21-34-755-00	6.97	M-1	Industrial District	Yes	Yes
FDL-15-17-28-11-007-00	1.37	M-1	Industrial District	Yes	Yes
FDL-15-17-33-11-001-00	153.05	M-1	Industrial District	Yes	Yes
M-1 Total	181.95				
FDL-15-17-27-11-018-00	2.75	M-BP	Industrial-Business Park District	Yes	Yes
FDL-15-17-27-11-249-02	12.53	M-BP	Industrial-Business Park District	Yes	Yes
FDL-15-17-27-24-999-00	36.18	M-BP	Industrial-Business Park District	Yes	Yes
M-BP Total	51.47				
FDL-15-17-02-33-516-00	0.16	O	Office District	Yes	Yes
FDL-15-17-02-33-525-01	1.25	O	Office District	No	Yes
FDL-15-17-10-44-866-00	0.93	O	Office District	Yes	Yes
FDL-15-17-21-32-252-01	1.84	O	Office District	Yes	Yes
FDL-15-18-06-33-533-00	5.94	O	Office District	Yes	Yes
FDL-15-18-07-31-005-00	2.07	O	Office District	Yes	Yes
FDL-15-18-07-31-007-00	3.57	O	Office District	Yes	Yes
FDL-15-18-07-31-009-00	5.93	O	Office District	Yes	Yes

Table 6: Parcels with Utility Access

PIN	Acres	Code	Zoning	Water	Sewer
FDL-15-18-07-31-010-00	5.94	O	Office District	Yes	Yes
FDL-15-18-07-34-750-01	11.73	O	Office District	Yes	Yes
FDL-15-18-07-34-751-00	1.50	O	Office District	Yes	Yes
FDL-15-18-07-34-752-00	3.54	O	Office District	Yes	Yes
O Total	44.40				
FDL-15-17-01-43-514-00	0.80	R-1	Single-Family Residential District	Yes	Yes
FDL-15-17-01-43-518-00	0.77	R-1	Single-Family Residential District	Yes	Yes
FDL-15-17-01-44-750-00	0.81	R-1	Single-Family Residential District	Yes	Yes
FDL-15-17-01-44-751-00	0.55	R-1	Single-Family Residential District	Yes	Yes
FDL-15-17-01-44-752-00	0.63	R-1	Single-Family Residential District	Yes	Yes
FDL-15-17-01-44-754-00	0.60	R-1	Single-Family Residential District	Yes	Yes
FDL-15-17-01-44-755-00	0.60	R-1	Single-Family Residential District	Yes	Yes
FDL-15-17-01-44-756-00	0.91	R-1	Single-Family Residential District	Yes	Yes
FDL-15-17-01-44-757-00	0.69	R-1	Single-Family Residential District	Yes	Yes
FDL-15-17-01-44-758-00	0.72	R-1	Single-Family Residential District	Yes	Yes
FDL-15-17-01-44-760-00	0.69	R-1	Single-Family Residential District	Yes	Yes
FDL-15-17-01-44-764-00	0.42	R-1	Single-Family Residential District	Yes	Yes
FDL-15-17-01-44-765-00	0.47	R-1	Single-Family Residential District	Yes	Yes
FDL-15-17-01-44-766-00	0.72	R-1	Single-Family Residential District	Yes	Yes
FDL-15-17-01-44-769-00	0.72	R-1	Single-Family Residential District	Yes	Yes
FDL-15-17-01-44-770-00	0.72	R-1	Single-Family Residential District	Yes	Yes
FDL-15-17-01-44-771-00	0.72	R-1	Single-Family Residential District	Yes	Yes
FDL-15-17-01-44-772-00	0.72	R-1	Single-Family Residential District	Yes	Yes
FDL-15-17-01-44-773-00	0.73	R-1	Single-Family Residential District	Yes	Yes
FDL-15-17-01-44-774-00	0.71	R-1	Single-Family Residential District	Yes	Yes
FDL-15-17-01-44-775-00	0.71	R-1	Single-Family Residential District	Yes	Yes
FDL-15-17-01-44-776-00	0.73	R-1	Single-Family Residential District	Yes	Yes
FDL-15-17-01-44-777-00	0.74	R-1	Single-Family Residential District	Yes	Yes
FDL-15-17-01-44-778-00	0.75	R-1	Single-Family Residential District	Yes	Yes
FDL-15-17-01-44-779-00	0.76	R-1	Single-Family Residential District	Yes	Yes
FDL-15-17-01-44-780-00	0.67	R-1	Single-Family Residential District	Yes	Yes
FDL-15-17-01-44-781-00	0.61	R-1	Single-Family Residential District	Yes	Yes
FDL-15-17-02-43-585-00	0.37	R-1	Single-Family Residential District	Yes	Yes
FDL-15-17-04-44-765-00	0.02	R-1	Single-Family Residential District	Yes	Yes
FDL-15-17-04-44-766-00	0.14	R-1	Single-Family Residential District	Yes	Yes
FDL-15-17-04-44-807-00	0.17	R-1	Single-Family Residential District	Yes	Yes
FDL-15-17-04-44-851-00	0.33	R-1	Single-Family Residential District	Yes	Yes
FDL-15-17-09-14-761-00	0.41	R-1	Single-Family Residential District	Yes	Yes
FDL-15-17-09-14-762-00	0.32	R-1	Single-Family Residential District	Yes	Yes
FDL-15-17-09-14-782-00	0.44	R-1	Single-Family Residential District	Yes	Yes
FDL-15-17-09-44-863-00	0.20	R-1	Single-Family Residential District	Yes	Yes
FDL-15-17-10-22-262-00	0.15	R-1	Single-Family Residential District	Yes	Yes
FDL-15-17-10-23-511-00	0.07	R-1	Single-Family Residential District	No	Yes

Table 6: Parcels with Utility Access

PIN	Acres	Code	Zoning	Water	Sewer
FDL-15-17-10-23-512-00	0.06	R-1	Single-Family Residential District	Yes	Yes
FDL-15-17-10-23-576-00	0.21	R-1	Single-Family Residential District	Yes	Yes
FDL-15-17-10-32-292-00	0.11	R-1	Single-Family Residential District	Yes	Yes
FDL-15-17-10-32-293-00	0.11	R-1	Single-Family Residential District	Yes	Yes
FDL-15-17-10-32-339-00	0.11	R-1	Single-Family Residential District	Yes	Yes
FDL-15-17-10-33-604-00	0.09	R-1	Single-Family Residential District	Yes	Yes
FDL-15-17-11-12-294-00	0.20	R-1	Single-Family Residential District	Yes	Yes
FDL-15-17-11-12-296-00	0.25	R-1	Single-Family Residential District	Yes	Yes
FDL-15-17-11-21-051-00	0.15	R-1	Single-Family Residential District	Yes	Yes
FDL-15-17-11-21-089-00	0.15	R-1	Single-Family Residential District	Yes	Yes
FDL-15-17-11-21-139-00	0.15	R-1	Single-Family Residential District	Yes	Yes
FDL-15-17-11-24-754-00	0.14	R-1	Single-Family Residential District	Yes	Yes
FDL-15-17-11-24-755-00	0.14	R-1	Single-Family Residential District	Yes	Yes
FDL-15-17-11-24-764-00	0.13	R-1	Single-Family Residential District	Yes	Yes
FDL-15-17-11-24-769-00	0.14	R-1	Single-Family Residential District	Yes	Yes
FDL-15-17-11-24-770-00	0.28	R-1	Single-Family Residential District	Yes	Yes
FDL-15-17-11-31-076-00	0.12	R-1	Single-Family Residential District	Yes	Yes
FDL-15-17-11-31-128-00	0.16	R-1	Single-Family Residential District	Yes	Yes
FDL-15-17-11-32-290-00	0.10	R-1	Single-Family Residential District	Yes	Yes
FDL-15-17-11-33-553-00	0.21	R-1	Single-Family Residential District	Yes	Yes
FDL-15-17-11-34-766-00	0.13	R-1	Single-Family Residential District	Yes	Yes
FDL-15-17-11-41-067-00	0.20	R-1	Single-Family Residential District	Yes	Yes
FDL-15-17-11-42-264-00	0.15	R-1	Single-Family Residential District	Yes	Yes
FDL-15-17-11-43-527-00	0.36	R-1	Single-Family Residential District	Yes	Yes
FDL-15-17-12-11-003-00	0.61	R-1	Single-Family Residential District	Yes	Yes
FDL-15-17-12-11-004-00	0.87	R-1	Single-Family Residential District	Yes	Yes
FDL-15-17-12-11-005-00	0.74	R-1	Single-Family Residential District	Yes	Yes
FDL-15-17-12-11-006-00	0.76	R-1	Single-Family Residential District	Yes	Yes
FDL-15-17-12-11-007-00	0.80	R-1	Single-Family Residential District	Yes	Yes
FDL-15-17-12-11-026-00	1.54	R-1	Single-Family Residential District	Yes	Yes
FDL-15-17-12-11-027-00	0.69	R-1	Single-Family Residential District	Yes	Yes
FDL-15-17-12-11-028-00	0.64	R-1	Single-Family Residential District	Yes	Yes
FDL-15-17-12-11-029-00	0.57	R-1	Single-Family Residential District	Yes	Yes
FDL-15-17-12-11-030-00	0.55	R-1	Single-Family Residential District	Yes	Yes
FDL-15-17-12-11-033-00	0.97	R-1	Single-Family Residential District	Yes	Yes
FDL-15-17-12-12-255-00	0.78	R-1	Single-Family Residential District	Yes	Yes
FDL-15-17-12-12-256-00	1.00	R-1	Single-Family Residential District	Yes	Yes
FDL-15-17-12-12-257-00	0.92	R-1	Single-Family Residential District	Yes	Yes
FDL-15-17-12-13-500-00	0.63	R-1	Single-Family Residential District	No	Yes
FDL-15-17-12-13-512-00	2.34	R-1	Single-Family Residential District	Yes	Yes
FDL-15-17-12-14-750-00	0.74	R-1	Single-Family Residential District	Yes	Yes
FDL-15-17-12-14-751-00	0.66	R-1	Single-Family Residential District	Yes	Yes
FDL-15-17-12-14-752-00	0.66	R-1	Single-Family Residential District	Yes	Yes

Table 6: Parcels with Utility Access

PIN	Acres	Code	Zoning	Water	Sewer
FDL-15-17-12-14-753-00	0.65	R-1	Single-Family Residential District	Yes	Yes
FDL-15-17-12-14-754-00	0.64	R-1	Single-Family Residential District	Yes	Yes
FDL-15-17-12-14-758-00	1.97	R-1	Single-Family Residential District	Yes	Yes
FDL-15-17-12-14-759-01	0.95	R-1	Single-Family Residential District	Yes	Yes
FDL-15-17-12-14-760-01	0.93	R-1	Single-Family Residential District	Yes	Yes
FDL-15-17-12-14-761-01	0.92	R-1	Single-Family Residential District	Yes	Yes
FDL-15-17-12-14-762-02	0.44	R-1	Single-Family Residential District	Yes	Yes
FDL-15-17-12-43-748-00	0.74	R-1	Single-Family Residential District	Yes	Yes
FDL-15-17-13-34-768-00	0.31	R-1	Single-Family Residential District	Yes	Yes
FDL-15-17-13-34-824-02	0.33	R-1	Single-Family Residential District	Yes	Yes
FDL-15-17-13-41-015-00	0.38	R-1	Single-Family Residential District	Yes	Yes
FDL-15-17-13-41-018-04	0.88	R-1	Single-Family Residential District	Yes	Yes
FDL-15-17-13-41-024-00	0.27	R-1	Single-Family Residential District	Yes	Yes
FDL-15-17-13-41-028-00	0.23	R-1	Single-Family Residential District	Yes	Yes
FDL-15-17-13-41-035-00	0.23	R-1	Single-Family Residential District	Yes	Yes
FDL-15-17-13-41-037-00	0.23	R-1	Single-Family Residential District	Yes	Yes
FDL-15-17-13-41-038-00	0.23	R-1	Single-Family Residential District	Yes	Yes
FDL-15-17-13-41-040-00	0.23	R-1	Single-Family Residential District	Yes	Yes
FDL-15-17-13-41-041-00	0.23	R-1	Single-Family Residential District	Yes	Yes
FDL-15-17-13-44-750-00	0.23	R-1	Single-Family Residential District	Yes	Yes
FDL-15-17-13-44-753-00	0.24	R-1	Single-Family Residential District	Yes	Yes
FDL-15-17-13-44-755-00	0.24	R-1	Single-Family Residential District	Yes	Yes
FDL-15-17-13-44-756-00	0.24	R-1	Single-Family Residential District	Yes	Yes
FDL-15-17-13-44-757-00	0.24	R-1	Single-Family Residential District	Yes	Yes
FDL-15-17-13-44-758-00	0.24	R-1	Single-Family Residential District	Yes	Yes
FDL-15-17-13-44-769-00	0.28	R-1	Single-Family Residential District	Yes	Yes
FDL-15-17-13-44-770-00	0.28	R-1	Single-Family Residential District	Yes	Yes
FDL-15-17-13-44-771-00	0.28	R-1	Single-Family Residential District	Yes	Yes
FDL-15-17-13-44-772-00	0.28	R-1	Single-Family Residential District	Yes	Yes
FDL-15-17-13-44-780-00	0.23	R-1	Single-Family Residential District	Yes	Yes
FDL-15-17-13-44-782-00	0.25	R-1	Single-Family Residential District	Yes	Yes
FDL-15-17-13-44-786-00	0.26	R-1	Single-Family Residential District	Yes	Yes
FDL-15-17-13-44-788-00	0.31	R-1	Single-Family Residential District	Yes	Yes
FDL-15-17-13-44-795-01	0.25	R-1	Single-Family Residential District	Yes	Yes
FDL-15-17-13-44-796-01	0.20	R-1	Single-Family Residential District	Yes	Yes
FDL-15-17-13-44-797-00	0.22	R-1	Single-Family Residential District	Yes	Yes
FDL-15-17-13-44-802-00	0.23	R-1	Single-Family Residential District	Yes	Yes
FDL-15-17-13-44-803-00	0.23	R-1	Single-Family Residential District	Yes	Yes
FDL-15-17-13-44-804-00	0.22	R-1	Single-Family Residential District	Yes	Yes
FDL-15-17-13-44-805-00	0.22	R-1	Single-Family Residential District	Yes	Yes
FDL-15-17-13-44-806-00	0.22	R-1	Single-Family Residential District	Yes	Yes
FDL-15-17-13-44-807-00	0.23	R-1	Single-Family Residential District	Yes	Yes
FDL-15-17-13-44-809-00	0.26	R-1	Single-Family Residential District	Yes	Yes

Table 6: Parcels with Utility Access

PIN	Acres	Code	Zoning	Water	Sewer
FDL-15-17-13-44-810-00	0.26	R-1	Single-Family Residential District	Yes	Yes
FDL-15-17-13-44-811-00	0.23	R-1	Single-Family Residential District	Yes	Yes
FDL-15-17-13-44-812-00	0.23	R-1	Single-Family Residential District	Yes	Yes
FDL-15-17-13-44-819-00	0.22	R-1	Single-Family Residential District	Yes	Yes
FDL-15-17-13-44-829-00	0.23	R-1	Single-Family Residential District	Yes	Yes
FDL-15-17-13-44-831-00	0.23	R-1	Single-Family Residential District	Yes	Yes
FDL-15-17-13-44-840-00	0.23	R-1	Single-Family Residential District	Yes	Yes
FDL-15-17-13-44-843-00	0.22	R-1	Single-Family Residential District	Yes	Yes
FDL-15-17-13-44-845-00	0.24	R-1	Single-Family Residential District	Yes	Yes
FDL-15-17-13-44-848-00	0.23	R-1	Single-Family Residential District	Yes	Yes
FDL-15-17-13-44-850-00	0.23	R-1	Single-Family Residential District	Yes	Yes
FDL-15-17-14-11-007-00	0.25	R-1	Single-Family Residential District	Yes	Yes
FDL-15-17-14-12-358-00	0.16	R-1	Single-Family Residential District	Yes	Yes
FDL-15-17-14-13-508-00	0.30	R-1	Single-Family Residential District	Yes	Yes
FDL-15-17-14-13-616-00	0.17	R-1	Single-Family Residential District	Yes	Yes
FDL-15-17-14-14-825-00	0.16	R-1	Single-Family Residential District	Yes	Yes
FDL-15-17-14-14-829-00	0.21	R-1	Single-Family Residential District	Yes	Yes
FDL-15-17-14-21-036-00	0.15	R-1	Single-Family Residential District	Yes	Yes
FDL-15-17-14-23-677-00	0.90	R-1	Single-Family Residential District	Yes	Yes
FDL-15-17-14-24-838-00	0.20	R-1	Single-Family Residential District	Yes	Yes
FDL-15-17-14-24-914-00	0.40	R-1	Single-Family Residential District	Yes	Yes
FDL-15-17-14-32-265-00	0.15	R-1	Single-Family Residential District	Yes	Yes
FDL-15-17-14-33-655-00	0.13	R-1	Single-Family Residential District	Yes	Yes
FDL-15-17-14-41-067-00	0.31	R-1	Single-Family Residential District	Yes	Yes
FDL-15-17-14-42-294-00	0.14	R-1	Single-Family Residential District	Yes	Yes
FDL-15-17-15-13-621-01	0.27	R-1	Single-Family Residential District	Yes	Yes
FDL-15-17-15-13-621-02	0.15	R-1	Single-Family Residential District	Yes	Yes
FDL-15-17-15-22-282-00	0.37	R-1	Single-Family Residential District	Yes	Yes
FDL-15-17-15-22-325-00	0.19	R-1	Single-Family Residential District	Yes	Yes
FDL-15-17-15-23-509-00	0.08	R-1	Single-Family Residential District	Yes	Yes
FDL-15-17-15-23-532-00	0.25	R-1	Single-Family Residential District	Yes	Yes
FDL-15-17-15-24-772-00	0.56	R-1	Single-Family Residential District	Yes	Yes
FDL-15-17-15-24-777-00	0.10	R-1	Single-Family Residential District	Yes	Yes
FDL-15-17-15-24-815-00	0.25	R-1	Single-Family Residential District	Yes	Yes
FDL-15-17-15-31-002-00	0.35	R-1	Single-Family Residential District	Yes	Yes
FDL-15-17-15-32-300-00	0.41	R-1	Single-Family Residential District	Yes	Yes
FDL-15-17-15-32-367-00	0.18	R-1	Single-Family Residential District	Yes	Yes
FDL-15-17-15-42-294-00	0.11	R-1	Single-Family Residential District	Yes	Yes
FDL-15-17-15-43-570-00	1.70	R-1	Single-Family Residential District	Yes	No
FDL-15-17-15-44-791-00	0.17	R-1	Single-Family Residential District	Yes	Yes
FDL-15-17-16-11-010-00	0.14	R-1	Single-Family Residential District	Yes	Yes
FDL-15-17-16-11-011-00	0.14	R-1	Single-Family Residential District	Yes	Yes
FDL-15-17-16-12-255-00	0.15	R-1	Single-Family Residential District	Yes	Yes

Table 6: Parcels with Utility Access

PIN	Acres	Code	Zoning	Water	Sewer
FDL-15-17-16-12-307-00	0.14	R-1	Single-Family Residential District	Yes	Yes
FDL-15-17-16-13-563-00	0.28	R-1	Single-Family Residential District	Yes	Yes
FDL-15-17-16-14-773-00	0.22	R-1	Single-Family Residential District	Yes	Yes
FDL-15-17-16-14-805-00	0.44	R-1	Single-Family Residential District	Yes	Yes
FDL-15-17-16-14-806-00	0.31	R-1	Single-Family Residential District	Yes	Yes
FDL-15-17-16-14-826-00	0.13	R-1	Single-Family Residential District	Yes	Yes
FDL-15-17-16-41-022-02	0.15	R-1	Single-Family Residential District	Yes	Yes
FDL-15-17-16-41-022-03	0.14	R-1	Single-Family Residential District	Yes	Yes
FDL-15-17-16-43-500-00	0.18	R-1	Single-Family Residential District	Yes	Yes
FDL-15-17-22-43-521-01	0.30	R-1	Single-Family Residential District	Yes	Yes
FDL-15-17-22-44-761-00	0.22	R-1	Single-Family Residential District	Yes	Yes
FDL-15-17-23-21-073-00	0.14	R-1	Single-Family Residential District	Yes	Yes
FDL-15-17-23-23-501-01	0.25	R-1	Single-Family Residential District	Yes	Yes
FDL-15-17-23-23-572-00	0.25	R-1	Single-Family Residential District	Yes	Yes
FDL-15-17-24-11-024-00	0.47	R-1	Single-Family Residential District	Yes	Yes
FDL-15-17-24-11-040-00	0.41	R-1	Single-Family Residential District	Yes	Yes
FDL-15-17-24-12-257-00	0.96	R-1	Single-Family Residential District	Yes	Yes
FDL-15-17-24-12-266-00	1.23	R-1	Single-Family Residential District	Yes	Yes
FDL-15-17-24-14-750-00	0.41	R-1	Single-Family Residential District	Yes	Yes
FDL-15-17-24-14-751-00	0.43	R-1	Single-Family Residential District	Yes	Yes
FDL-15-17-24-14-751-01	0.42	R-1	Single-Family Residential District	Yes	Yes
FDL-15-17-24-14-752-00	0.42	R-1	Single-Family Residential District	Yes	Yes
FDL-15-17-24-14-754-00	0.43	R-1	Single-Family Residential District	Yes	Yes
FDL-15-17-24-14-756-00	0.46	R-1	Single-Family Residential District	Yes	Yes
FDL-15-17-24-14-757-00	0.50	R-1	Single-Family Residential District	Yes	Yes
FDL-15-17-24-21-002-00	1.25	R-1	Single-Family Residential District	Yes	Yes
FDL-15-17-24-21-003-00	0.39	R-1	Single-Family Residential District	Yes	Yes
FDL-15-17-24-21-010-01	0.42	R-1	Single-Family Residential District	Yes	Yes
FDL-15-17-24-22-262-01	0.27	R-1	Single-Family Residential District	Yes	Yes
FDL-15-17-24-23-561-00	0.43	R-1	Single-Family Residential District	Yes	Yes
FDL-15-17-24-31-011-00	1.34	R-1	Single-Family Residential District	No	Yes
FDL-15-17-24-41-027-00	0.66	R-1	Single-Family Residential District	Yes	Yes
FDL-15-17-25-21-001-00	0.26	R-1	Single-Family Residential District	Yes	Yes
FDL-15-17-25-21-008-00	0.29	R-1	Single-Family Residential District	Yes	Yes
FDL-15-17-25-22-259-00	0.30	R-1	Single-Family Residential District	Yes	Yes
FDL-15-17-25-22-261-00	0.31	R-1	Single-Family Residential District	Yes	Yes
FDL-15-17-25-22-270-00	0.23	R-1	Single-Family Residential District	Yes	Yes
FDL-15-17-25-22-272-00	0.20	R-1	Single-Family Residential District	Yes	Yes
FDL-15-17-25-22-274-00	0.20	R-1	Single-Family Residential District	Yes	Yes
FDL-15-17-26-11-014-00	0.48	R-1	Single-Family Residential District	Yes	Yes
FDL-15-17-26-11-022-00	0.39	R-1	Single-Family Residential District	Yes	Yes
FDL-15-17-26-12-320-00	0.24	R-1	Single-Family Residential District	Yes	Yes
FDL-15-17-26-12-330-00	0.24	R-1	Single-Family Residential District	Yes	Yes

Table 6: Parcels with Utility Access

PIN	Acres	Code	Zoning	Water	Sewer
FDL-15-17-26-12-333-00	0.32	R-1	Single-Family Residential District	Yes	Yes
FDL-15-17-26-12-336-00	0.27	R-1	Single-Family Residential District	Yes	Yes
FDL-15-17-26-12-341-00	0.29	R-1	Single-Family Residential District	Yes	Yes
FDL-15-17-26-12-342-00	0.30	R-1	Single-Family Residential District	Yes	Yes
FDL-15-17-26-13-507-00	0.28	R-1	Single-Family Residential District	Yes	Yes
FDL-15-17-26-13-509-00	0.35	R-1	Single-Family Residential District	Yes	Yes
FDL-15-17-26-13-515-00	0.31	R-1	Single-Family Residential District	Yes	Yes
FDL-15-17-26-13-516-00	0.26	R-1	Single-Family Residential District	Yes	Yes
FDL-15-17-26-13-517-00	0.26	R-1	Single-Family Residential District	Yes	Yes
FDL-15-17-26-13-518-00	0.26	R-1	Single-Family Residential District	Yes	Yes
FDL-15-17-26-13-524-00	0.26	R-1	Single-Family Residential District	Yes	Yes
FDL-15-17-26-14-752-00	0.29	R-1	Single-Family Residential District	Yes	Yes
FDL-15-17-26-21-071-00	0.29	R-1	Single-Family Residential District	Yes	Yes
FDL-15-17-26-21-077-00	0.28	R-1	Single-Family Residential District	Yes	Yes
FDL-15-17-26-21-083-00	0.29	R-1	Single-Family Residential District	Yes	Yes
FDL-15-17-26-21-085-00	0.28	R-1	Single-Family Residential District	Yes	Yes
FDL-15-17-26-41-028-00	0.31	R-1	Single-Family Residential District	Yes	Yes
FDL-15-17-26-41-035-00	0.27	R-1	Single-Family Residential District	Yes	Yes
FDL-15-17-26-42-257-00	0.31	R-1	Single-Family Residential District	Yes	Yes
FDL-15-18-05-34-757-00	0.77	R-1	Single-Family Residential District	Yes	Yes
FDL-15-18-05-43-503-00	0.64	R-1	Single-Family Residential District	Yes	Yes
FDL-15-18-05-43-504-00	0.48	R-1	Single-Family Residential District	Yes	Yes
FDL-15-18-05-43-505-00	0.49	R-1	Single-Family Residential District	Yes	Yes
FDL-15-18-05-43-515-00	0.46	R-1	Single-Family Residential District	Yes	Yes
FDL-15-18-05-43-516-00	0.46	R-1	Single-Family Residential District	Yes	Yes
FDL-15-18-05-43-517-00	0.48	R-1	Single-Family Residential District	Yes	Yes
FDL-15-18-05-43-520-00	18.19	R-1	Single-Family Residential District	Yes	Yes
FDL-15-18-06-11-001-00	0.52	R-1	Single-Family Residential District	Yes	Yes
FDL-15-18-06-11-002-00	0.60	R-1	Single-Family Residential District	Yes	Yes
FDL-15-18-06-11-003-00	0.76	R-1	Single-Family Residential District	Yes	Yes
FDL-15-18-06-11-004-00	0.82	R-1	Single-Family Residential District	Yes	Yes
FDL-15-18-06-11-005-00	3.78	R-1	Single-Family Residential District	Yes	Yes
FDL-15-18-06-11-007-00	0.52	R-1	Single-Family Residential District	Yes	Yes
FDL-15-18-06-11-010-00	0.45	R-1	Single-Family Residential District	Yes	Yes
FDL-15-18-06-11-013-00	2.25	R-1	Single-Family Residential District	Yes	No
FDL-15-18-06-11-014-00	0.46	R-1	Single-Family Residential District	Yes	Yes
FDL-15-18-06-11-017-00	0.58	R-1	Single-Family Residential District	Yes	Yes
FDL-15-18-06-11-018-00	0.65	R-1	Single-Family Residential District	Yes	Yes
FDL-15-18-06-11-019-00	0.63	R-1	Single-Family Residential District	Yes	Yes
FDL-15-18-06-11-020-00	0.48	R-1	Single-Family Residential District	Yes	Yes
FDL-15-18-06-11-021-00	0.52	R-1	Single-Family Residential District	Yes	Yes
FDL-15-18-06-11-022-00	0.47	R-1	Single-Family Residential District	Yes	Yes
FDL-15-18-06-11-024-00	1.06	R-1	Single-Family Residential District	Yes	Yes

Table 6: Parcels with Utility Access

PIN	Acres	Code	Zoning	Water	Sewer
FDL-15-18-06-11-026-00	0.44	R-1	Single-Family Residential District	Yes	Yes
FDL-15-18-06-11-028-00	0.52	R-1	Single-Family Residential District	Yes	Yes
FDL-15-18-06-11-029-00	0.55	R-1	Single-Family Residential District	Yes	Yes
FDL-15-18-06-11-030-00	0.60	R-1	Single-Family Residential District	Yes	Yes
FDL-15-18-06-11-031-00	0.50	R-1	Single-Family Residential District	Yes	Yes
FDL-15-18-06-11-032-00	0.30	R-1	Single-Family Residential District	Yes	Yes
FDL-15-18-06-12-252-00	0.44	R-1	Single-Family Residential District	Yes	Yes
FDL-15-18-06-12-253-00	0.42	R-1	Single-Family Residential District	Yes	Yes
FDL-15-18-06-12-262-00	0.31	R-1	Single-Family Residential District	Yes	Yes
FDL-15-18-06-12-263-00	0.38	R-1	Single-Family Residential District	Yes	Yes
FDL-15-18-06-12-265-00	0.39	R-1	Single-Family Residential District	Yes	Yes
FDL-15-18-06-12-266-00	0.43	R-1	Single-Family Residential District	Yes	Yes
FDL-15-18-06-12-267-00	0.41	R-1	Single-Family Residential District	Yes	Yes
FDL-15-18-06-12-268-00	0.44	R-1	Single-Family Residential District	Yes	Yes
FDL-15-18-06-12-269-00	0.34	R-1	Single-Family Residential District	Yes	Yes
FDL-15-18-06-12-270-00	0.30	R-1	Single-Family Residential District	Yes	Yes
FDL-15-18-06-12-271-00	0.32	R-1	Single-Family Residential District	Yes	Yes
FDL-15-18-06-12-272-00	8.63	R-1	Single-Family Residential District	Yes	Yes
FDL-15-18-06-34-750-00	0.51	R-1	Single-Family Residential District	Yes	No
FDL-15-18-06-34-751-00	0.36	R-1	Single-Family Residential District	Yes	No
FDL-15-18-06-34-774-00	0.26	R-1	Single-Family Residential District	Yes	No
FDL-15-18-06-34-775-00	0.26	R-1	Single-Family Residential District	Yes	No
FDL-15-18-06-34-778-00	0.35	R-1	Single-Family Residential District	Yes	No
FDL-15-18-06-34-794-00	0.27	R-1	Single-Family Residential District	Yes	No
FDL-15-18-06-34-795-00	0.28	R-1	Single-Family Residential District	Yes	No
FDL-15-18-06-34-833-00	0.34	R-1	Single-Family Residential District	Yes	No
FDL-15-18-06-34-839-00	0.36	R-1	Single-Family Residential District	Yes	No
FDL-15-18-06-34-842-00	0.40	R-1	Single-Family Residential District	Yes	No
FDL-15-18-06-34-843-00	0.31	R-1	Single-Family Residential District	Yes	No
FDL-15-18-06-34-844-00	0.26	R-1	Single-Family Residential District	Yes	No
FDL-15-18-06-34-845-00	0.26	R-1	Single-Family Residential District	Yes	No
FDL-15-18-06-34-846-00	0.35	R-1	Single-Family Residential District	Yes	No
FDL-15-18-06-34-847-00	0.33	R-1	Single-Family Residential District	Yes	Yes
FDL-15-18-06-34-848-00	0.25	R-1	Single-Family Residential District	Yes	No
FDL-15-18-06-34-849-00	0.23	R-1	Single-Family Residential District	Yes	No
FDL-15-18-06-34-850-00	0.23	R-1	Single-Family Residential District	Yes	No
FDL-15-18-06-34-851-00	0.23	R-1	Single-Family Residential District	Yes	No
FDL-15-18-06-34-852-00	0.23	R-1	Single-Family Residential District	Yes	No
FDL-15-18-06-34-853-00	0.23	R-1	Single-Family Residential District	Yes	No
FDL-15-18-06-34-854-00	0.24	R-1	Single-Family Residential District	Yes	No
FDL-15-18-06-43-514-00	0.33	R-1	Single-Family Residential District	Yes	Yes
FDL-15-18-06-43-526-00	0.36	R-1	Single-Family Residential District	Yes	Yes
FDL-15-18-07-11-002-00	8.20	R-1	Single-Family Residential District	Yes	Yes

Table 6: Parcels with Utility Access

PIN	Acres	Code	Zoning	Water	Sewer
FDL-15-18-07-11-008-00	1.00	R-1	Single-Family Residential District	Yes	Yes
FDL-15-18-07-14-750-00	6.89	R-1	Single-Family Residential District	Yes	Yes
FDL-15-18-07-14-751-02	6.47	R-1	Single-Family Residential District	Yes	Yes
FDL-15-18-07-41-010-00	9.90	R-1	Single-Family Residential District	Yes	Yes
FDL-15-18-07-44-750-00	0.78	R-1	Single-Family Residential District	Yes	Yes
FDL-15-18-07-44-758-00	14.19	R-1	Single-Family Residential District	Yes	Yes
FDL-15-18-08-22-253-00	0.66	R-1	Single-Family Residential District	Yes	Yes
FDL-15-18-08-23-748-00	0.99	R-1	Single-Family Residential District	No	Yes
FDL-15-18-18-24-809-00	3.21	R-1	Single-Family Residential District	Yes	Yes
FDL-15-18-18-24-999-01	63.63	R-1	Single-Family Residential District	Yes	Yes
R-1 Total	268.08				
FDL-15-17-01-43-513-00	0.97	R-2	Two-Family Residential District	Yes	Yes
FDL-15-17-01-44-782-00	0.43	R-2	Two-Family Residential District	Yes	Yes
FDL-15-17-01-44-783-00	0.43	R-2	Two-Family Residential District	Yes	Yes
FDL-15-17-01-44-785-00	0.43	R-2	Two-Family Residential District	Yes	Yes
FDL-15-17-01-44-786-00	0.43	R-2	Two-Family Residential District	Yes	Yes
FDL-15-17-01-44-787-00	0.43	R-2	Two-Family Residential District	Yes	Yes
FDL-15-17-01-44-997-00	11.17	R-2	Two-Family Residential District	Yes	Yes
FDL-15-17-03-34-771-00	0.17	R-2	Two-Family Residential District	Yes	Yes
FDL-15-17-10-11-113-00	0.14	R-2	Two-Family Residential District	Yes	Yes
FDL-15-17-13-44-760-00	0.24	R-2	Two-Family Residential District	Yes	Yes
FDL-15-17-13-44-764-01	0.27	R-2	Two-Family Residential District	Yes	Yes
FDL-15-17-15-32-344-00	0.18	R-2	Two-Family Residential District	Yes	Yes
FDL-15-17-15-32-347-00	0.18	R-2	Two-Family Residential District	Yes	Yes
FDL-15-17-22-44-998-00	1.31	R-2	Two-Family Residential District	Yes	Yes
FDL-15-17-23-42-255-00	0.95	R-2	Two-Family Residential District	Yes	Yes
FDL-15-17-26-11-249-02	67.90	R-2	Two-Family Residential District	Yes	Yes
FDL-15-17-26-13-528-00	0.27	R-2	Two-Family Residential District	Yes	Yes
FDL-15-17-26-14-751-00	0.29	R-2	Two-Family Residential District	Yes	Yes
FDL-15-17-26-41-001-00	1.05	R-2	Two-Family Residential District	Yes	Yes
FDL-15-17-26-41-007-01	0.95	R-2	Two-Family Residential District	Yes	Yes
FDL-15-17-26-41-020-00	1.31	R-2	Two-Family Residential District	Yes	Yes
FDL-15-17-99-LI-010-00	4.91	R-2	Two-Family Residential District	Yes	Yes
FDL-15-17-99-LI-020-00	4.91	R-2	Two-Family Residential District	Yes	Yes
FDL-15-17-99-LI-030-00	4.91	R-2	Two-Family Residential District	Yes	Yes
FDL-15-17-99-LI-040-00	4.91	R-2	Two-Family Residential District	Yes	Yes
FDL-15-17-99-LI-050-00	4.91	R-2	Two-Family Residential District	Yes	Yes
FDL-15-17-99-LI-060-00	4.91	R-2	Two-Family Residential District	Yes	Yes
FDL-15-17-99-LI-070-00	4.91	R-2	Two-Family Residential District	Yes	Yes
FDL-15-17-99-LI-080-00	4.91	R-2	Two-Family Residential District	Yes	Yes
FDL-15-17-99-LI-090-00	4.91	R-2	Two-Family Residential District	Yes	Yes
FDL-15-17-99-LI-100-00	4.91	R-2	Two-Family Residential District	Yes	Yes
FDL-15-17-99-LI-110-00	4.91	R-2	Two-Family Residential District	Yes	Yes

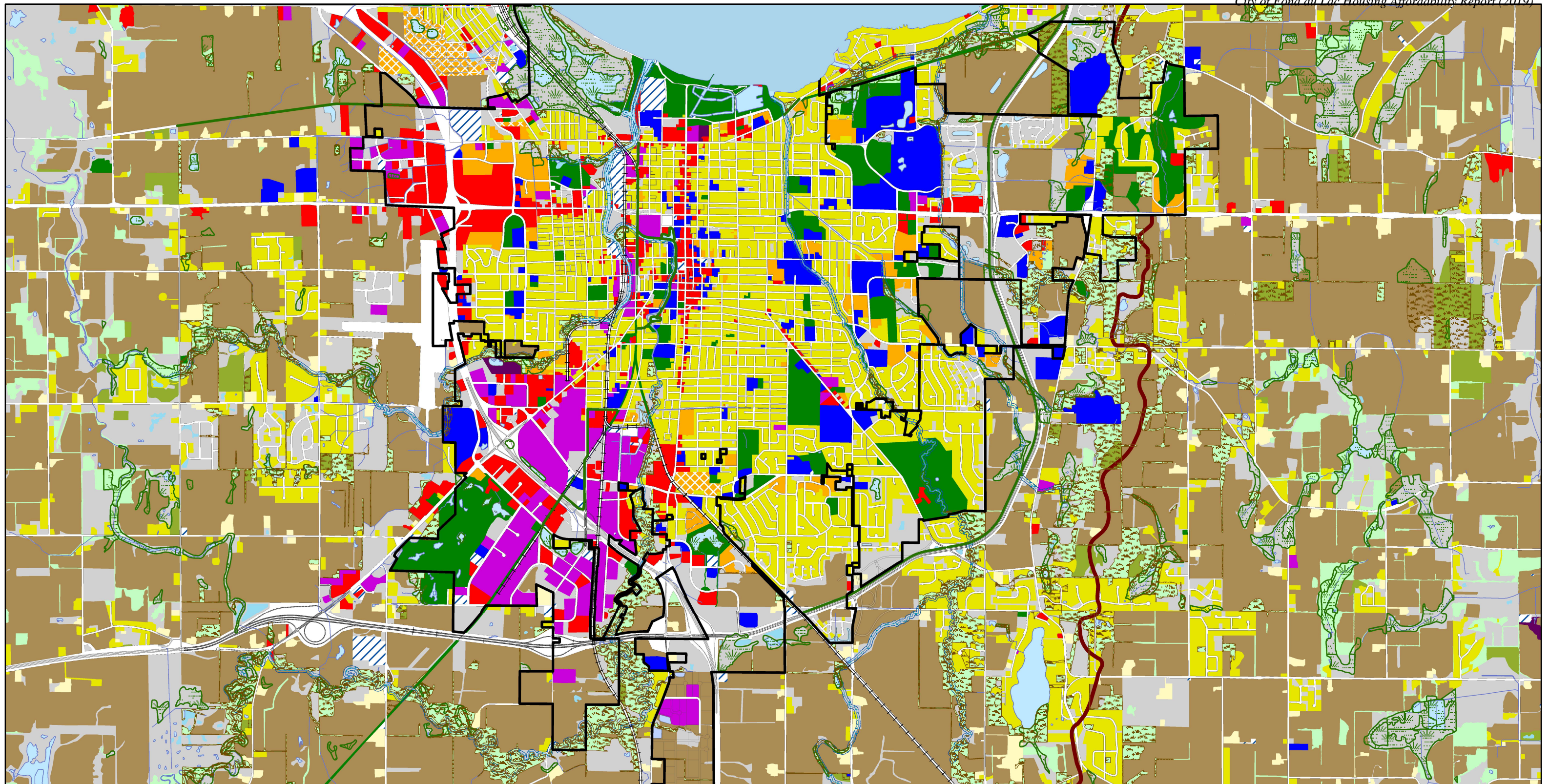
Table 6: Parcels with Utility Access

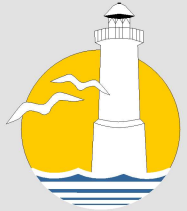
PIN	Acres	Code	Zoning	Water	Sewer
FDL-15-17-99-LI-120-00	4.91	R-2	Two-Family Residential District	Yes	Yes
FDL-15-18-05-33-544-00	0.78	R-2	Two-Family Residential District	Yes	Yes
FDL-15-18-05-33-545-00	0.76	R-2	Two-Family Residential District	Yes	Yes
FDL-15-18-05-33-547-00	0.60	R-2	Two-Family Residential District	Yes	Yes
FDL-15-18-05-33-549-00	0.74	R-2	Two-Family Residential District	Yes	Yes
FDL-15-18-06-12-254-00	0.42	R-2	Two-Family Residential District	Yes	Yes
FDL-15-18-06-12-255-00	0.58	R-2	Two-Family Residential District	Yes	Yes
FDL-15-18-06-12-256-00	0.93	R-2	Two-Family Residential District	Yes	Yes
FDL-15-18-06-12-257-00	0.60	R-2	Two-Family Residential District	Yes	Yes
FDL-15-18-06-12-260-00	0.44	R-2	Two-Family Residential District	Yes	Yes
FDL-15-18-06-33-502-00	0.42	R-2	Two-Family Residential District	Yes	Yes
FDL-15-18-06-33-503-00	0.33	R-2	Two-Family Residential District	Yes	Yes
FDL-15-18-06-33-504-00	0.27	R-2	Two-Family Residential District	No	Yes
FDL-15-18-06-33-505-00	0.26	R-2	Two-Family Residential District	No	Yes
FDL-15-18-06-33-506-00	0.25	R-2	Two-Family Residential District	No	Yes
FDL-15-18-06-33-507-00	0.25	R-2	Two-Family Residential District	No	Yes
FDL-15-18-06-33-508-00	0.24	R-2	Two-Family Residential District	No	Yes
FDL-15-18-06-33-509-00	0.24	R-2	Two-Family Residential District	Yes	Yes
FDL-15-18-06-33-510-00	0.24	R-2	Two-Family Residential District	Yes	Yes
R-2 Total	156.72				
FDL-15-17-10-34-822-00	0.32	R-3	Residential-Central Area District	Yes	Yes
FDL-15-17-11-33-563-00	0.22	R-3	Residential-Central Area District	Yes	Yes
FDL-15-17-11-33-582-00	0.17	R-3	Residential-Central Area District	Yes	Yes
FDL-15-17-15-13-610-00	0.06	R-3	Residential-Central Area District	Yes	Yes
FDL-15-17-15-21-003-00	0.19	R-3	Residential-Central Area District	Yes	Yes
R-3 Total	0.96				
FDL-15-17-02-42-281-01	2.48	R-4	Multi-Family Residential District	Yes	Yes
FDL-15-17-04-34-775-00	2.21	R-4	Multi-Family Residential District	Yes	Yes
FDL-15-17-09-12-262-01	6.24	R-4	Multi-Family Residential District	Yes	Yes
FDL-15-17-10-12-379-00	0.11	R-4	Multi-Family Residential District	Yes	Yes
FDL-15-17-10-13-511-00	0.11	R-4	Multi-Family Residential District	Yes	Yes
FDL-15-17-10-41-036-00	0.05	R-4	Multi-Family Residential District	Yes	Yes
FDL-15-17-10-41-054-00	0.05	R-4	Multi-Family Residential District	Yes	Yes
FDL-15-17-10-42-260-00	0.10	R-4	Multi-Family Residential District	Yes	Yes
FDL-15-17-11-32-316-00	0.07	R-4	Multi-Family Residential District	Yes	Yes
FDL-15-17-11-44-759-00	0.15	R-4	Multi-Family Residential District	Yes	Yes
FDL-15-17-11-44-760-00	0.14	R-4	Multi-Family Residential District	Yes	Yes
FDL-15-17-13-21-004-00	1.13	R-4	Multi-Family Residential District	Yes	Yes
FDL-15-17-13-21-072-00	5.39	R-4	Multi-Family Residential District	Yes	Yes
FDL-15-17-13-21-074-00	1.29	R-4	Multi-Family Residential District	Yes	Yes
FDL-15-17-13-31-003-00	0.28	R-4	Multi-Family Residential District	Yes	Yes
FDL-15-17-13-31-005-00	0.88	R-4	Multi-Family Residential District	Yes	Yes
FDL-15-17-13-42-266-00	0.50	R-4	Multi-Family Residential District	Yes	Yes

Table 6: Parcels with Utility Access

PIN	Acres	Code	Zoning	Water	Sewer
FDL-15-17-16-22-269-00	0.65	R-4	Multi-Family Residential District	Yes	Yes
FDL-15-17-16-41-025-00	1.40	R-4	Multi-Family Residential District	Yes	Yes
FDL-15-17-16-41-025-17	0.12	R-4	Multi-Family Residential District	Yes	Yes
FDL-15-17-23-42-253-00	0.48	R-4	Multi-Family Residential District	Yes	Yes
FDL-15-17-23-42-254-00	0.67	R-4	Multi-Family Residential District	Yes	Yes
FDL-15-17-24-34-999-00	34.17	R-4	Multi-Family Residential District	Yes	Yes
FDL-15-17-26-41-003-00	0.53	R-4	Multi-Family Residential District	Yes	Yes
FDL-15-18-06-33-513-00	4.54	R-4	Multi-Family Residential District	Yes	Yes
FDL-15-18-06-33-523-01	7.79	R-4	Multi-Family Residential District	Yes	Yes
FDL-15-18-07-42-250-02	24.26	R-4	Multi-Family Residential District	Yes	Yes
FDL-15-18-07-43-250-02	30.17	R-4	Multi-Family Residential District	Yes	Yes
FDL-15-18-18-32-497-01	5.79	R-4	Multi-Family Residential District	Yes	Yes
R-4 Total	131.74		Residential Total - 391		
Grand Total	1173.8		Non Res. Total - 127		

APPENDIX B: FUTURE LAND USE





LAND USE

MAP 3


LAND USE CATEGORIES

 COMMERCIAL	 OPEN OTHER LAND
 FARMSTEDS	 PLANTED WOODLANDS
 GENERAL WOODLANDS	 QUARRIES
 INDUSTRIAL	 RECREATIONAL FACILITIES
 INSTITUTIONAL FACILITIES	 SINGLE FAMILY RESIDENTIAL
 MOBILE HOME PARKS	 TRANSPORTATION
 MULTI-FAMILY	 UTILITIES/COMMUNICATIONS
 NON-IRRIGATED CROPLAND	

COVERAGES

 MUNICIPAL BOUNDARY
 NIAGARA ESCARPMENT
 PUBLIC & PRIVATE TRAILS
 RAILROAD TRACKS
 WETLANDS <2 ACRES
 WETLANDS
 WOODLANDS

DISCLAIMER
 THE CITY OF FOND DU LAC CREATES AND MAINTAINS GEOSPATIAL PRODUCTS FOR ITS OWN USE. THESE RESOURCES ARE NOT INTENDED TO BE USED FOR LEGAL, ENGINEERING, OR SURVEY PURPOSES, AND ARE PROVIDED "AS-IS" WITHOUT WARRANTY OF ANY KIND. THE CITY OF FOND DU LAC ASSUMES NO LIABILITY FOR THE ACCURACY, CORRECTNESS, OR USE OF THESE PRODUCTS.



1 IN = 1 MI