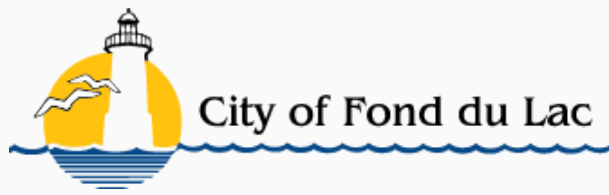


Stormwater is the #1  
contributor of pollution to  
waters in the United States.

### What is it?

Stormwater is rain or melting snow that runs off the land and flows into the nearest river, creek, or lake. As stormwater flows from rooftops, over paved areas, bare soil and lawns it picks up and transports pollutants like animal waste, litter, leaves, road salt, pesticides, fertilizers, oil and other organic materials. In our region, this ultimately ends in Lake Winnebago, an ecosystem for many plants, aquatic species, and recreational activities.



## CITY OF FOND DU LAC DEPARTMENT OF PUBLIC WORKS

### **Engineering & Traffic Division**

160 S Macy Street

Phone: 920-322-3470

Email: [sharbridge@fdlwi.gov](mailto:sharbridge@fdlwi.gov).

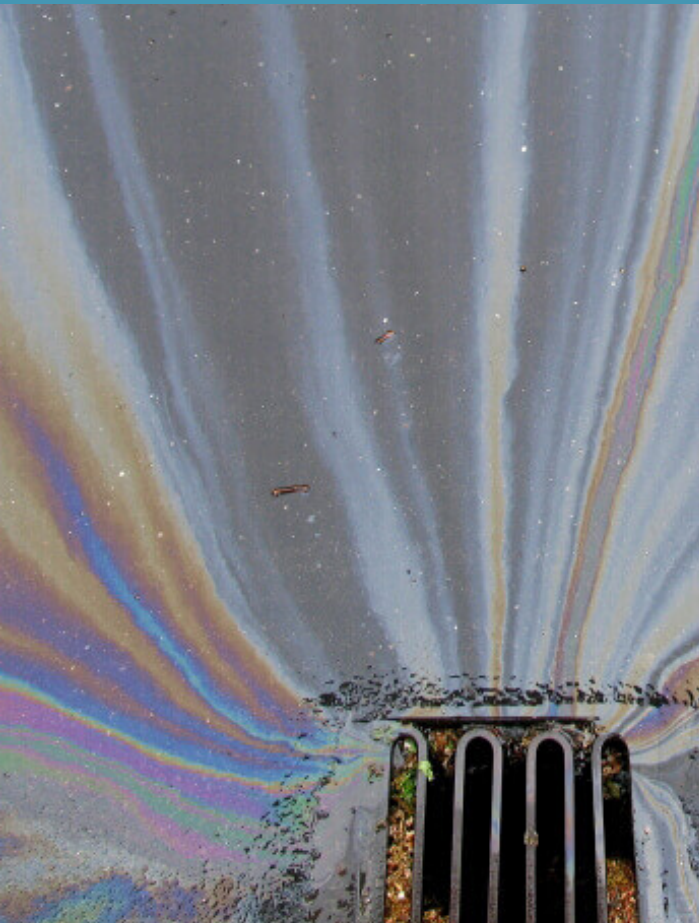
Website: <https://adopt-a-storm-drain-fonddulac.hub.arcgis.com/>

ADOPT-A-STORM DRAIN PROGRAM IS A  
CITY OF FOND DU LAC PROJECT IN  
PARTNERSHIP WITH:



# Adopt Your Neighborhood Storm Drain

Be a part of the solution  
to end stormwater pollution.  
Help keep our waterways clean.







## Tips to Prevent Stormwater Pollution

- In the spring, sweep up road sand and salt.
- In the summer, mow the perimeter of your lawn so the grass clippings stay in the lawn, not the road.
- In the fall, clear leaves from storm drains and gutters, mulch them into your lawn with a mower.
- In the winter, use less sand and salt, and apply at appropriate times.
- Divert stormwater to lawns or gardens where it can safely soak in
- Wash your car in a car wash or divert soapy water onto your lawn..
- Keep your car tuned up so fluids don't leak on the street.
- Pick up and properly dispose of pet waste.
- Recycle or dispose of litter and garbage found in the streets, sidewalks, or lawns.

## Why Adopt-A-Storm-Drain?

- Prevents localized flooding by keeping drains clear of debris.
- Protects fish, waterfowl, and other wildlife by keeping pollutants out of the water.
- Keep your neighborhood litter-free and attractive.
- Enhance community awareness of storm water pollution prevention.
- Fertilizer from lawns can cause excessive algae growth and oxygen depletion for fish.
- Leaves and grass clippings can increase the amount of phosphorus entering the waterways which also contributes to algae growth.

## What is Adopt-A-Storm-Drain?

The Department of Public Works is reaching out to residents, service groups, businesses, and the community to Adopt-A-Storm Drain. We are asking the community to help assist in keeping storm inlets clear of debris and obstructions by completing simple tasks.

**1. Inspect & Remove Debris:** The grates of the inlets can become clogged with debris, leaves, and grass clippings. Regularly inspect the grate and gutter and remove any debris.

**2. Report Maintenance Issues:** Report significant damage or debris under the grate to Engineering at 920-322-3470.

**3. Report Unlawful Dumping:** Report any unlawful dumping of chemicals or sewer waste into the drain.

**4. Join our Newsletter** by emailing [sharbridge@fdl.wi.gov](mailto:sharbridge@fdl.wi.gov) or to be included in other efforts to clean up our waters. You can also reach out to our partner Sustain Fond du Lac at [SustainFDL.org](http://SustainFDL.org)

## How to Adopt-A-Storm-Drain

1. Identify the storm drain you want to adopt.

2. Register the drain adoption by selecting the drain at <https://adopt-a-storm-drain-fonddulac.hub.arcgis.com/> and filling out the registration or by contacting the City of Fond du Lac Engineering Division.

3. Inspect and clean your storm drain every other week or as needed before a forecasted rainfall. During the winter the storm drains should be kept clear of snow and ice.