



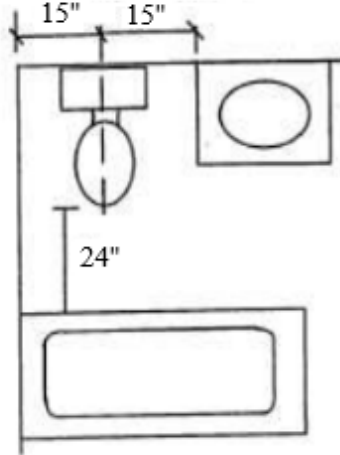
City of Fond du Lac First on the Lake

BATHROOMS

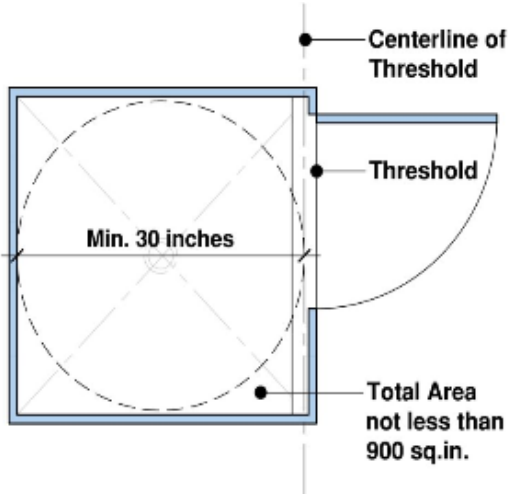
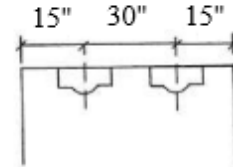
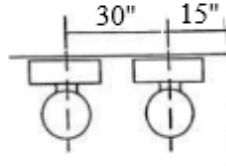
Website: www.fdl.wi.gov

City-County Government Center
160 S. Macy Street~P.O. Box 150~Fond du Lac, WI 54936-0150

Clearance Requirements for Plumbing Fixtures in Dwelling Units



A water closet or urinal may not be located closer than 15 inches from its center to any side wall, partition, vanity, or other obstruction, nor closer than 30 inches center to center, between water closets or urinals. There shall be at least 24 inches clearance in front of a water closet to any wall, fixture, or door.



All shower compartments, regardless of shape, shall have a minimum finished interior of 900 square inches and shall be capable of encompassing a circle with a diameter of 30 inches. The minimum required area and dimension shall be measured in a horizontal plane 24 inches above the top of the threshold and may not extend beyond the centerline of the threshold. The minimum area and dimensions shall be maintained to a point 70 inches above the shower waste outlet with no protrusions other than the fixture valve or valves, showerheads, soap dishes, retractable seats and safety grab bars or rails.

These clearances do not meet the ADA requirements per ICC A117.1-2009