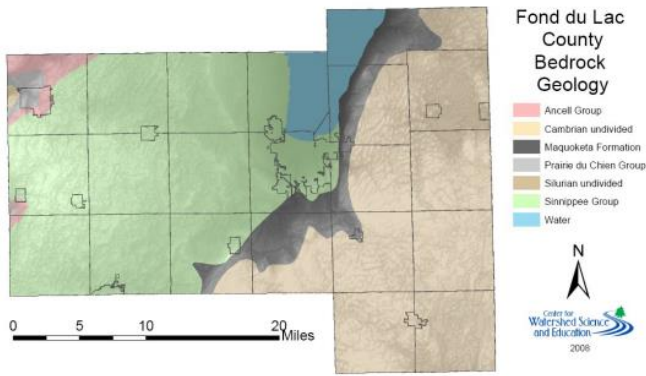


Where Does Your Water Come From?

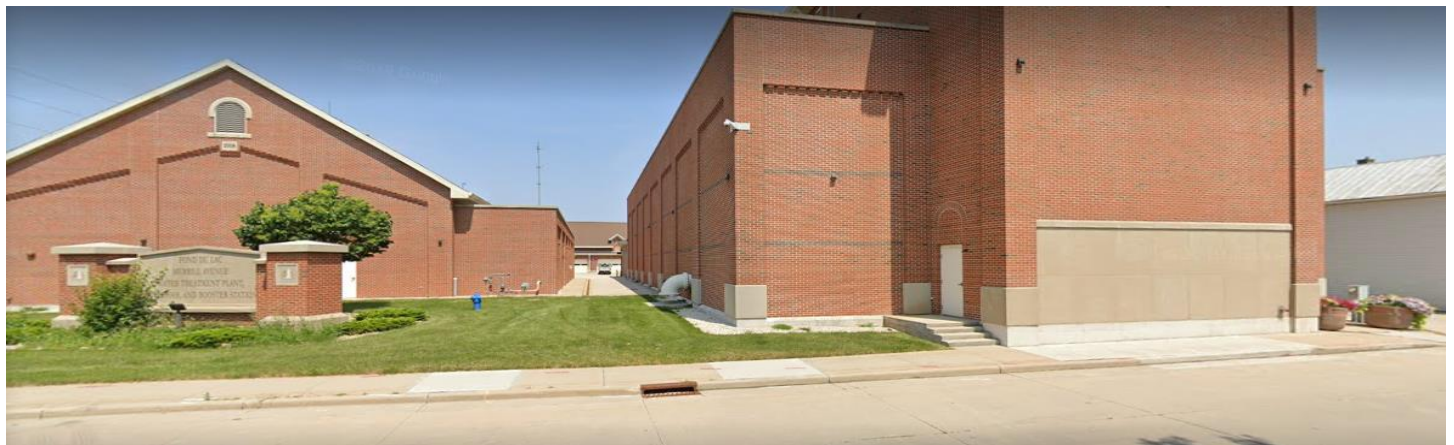
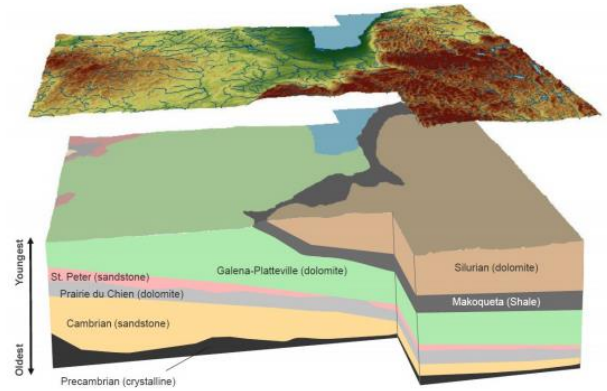
Unlike some water utility's around the area, the Fond du Lac Water Utility does not pump water from Lake Winnebago. All water supplied to City of Fond du Lac water customers, is supplied from groundwater within and near the city.



Source: Digital Geologic Map and Mineral Deposits of Minnesota, Wisconsin, and Michigan (Version 3.0)
Disclaimer: The geologic map was digitized from compilations ranging in scale from 1:1,000,000 to 1:100,000 and is an accurate representation of the source maps. It is displayed here for educational purposes and is not intended for site specific planning.

groundwater you drink is drawn from 2 aquifers the Lower Bedrock Aquifer which is comprised of Cambrian Sandstone and Prairie du Chien dolomite & Upper Bedrock Aquifer comprised of the Sinnipee Dolomite and St. Peter Sandstone. Water is pumped from 17 well locations & from depths between 745 ft. to 1,140 ft.

The



Water then travels to one of Fond du Lac Water Utility's four treatment plants where water is treated & distributed to over 16,000 water customers. These water treatment plants removed radium, iron, arsenic and add chlorine to disinfect the water before it is pumped through 214 miles of water main underneath the city. On average over 1.7 Billion gallons of water are treated each year.



**The Utility stopped adding fluoride as an additive, to your drinking water in 2016.*